



One Weald – Repurposing an Ancient Landscape

Anne Tipples



Anne Tipples

The Weald – ‘the most intact medieval landscape in north-west Europe’


*Jim Dixon,
The Times, Dec 1, 2019*



Anne Tipples

“just featureless farmland”

***MBC Councillor,
(pers comm) October 2025***

A photograph showing two combine harvesters working in a field of golden grain. The harvester on the right is red and is in the foreground, moving towards the viewer. The harvester on the left is green and is further back. Both machines are kicking up a large cloud of dust, which fills the upper half of the frame. The background shows a line of trees under a hazy sky.

Cereals, fruit, hops

Claire Eckley

**Here's a photo of our
precision hoe. Terrible
for ground nesting
birds, great for
herbicide free crop.**

Claire Eckley





Lou Carpenter



Freshwater Habitats Trust

WOODLAND & WATER



Darren Nicholls



Marden Meadow SSSI:

One of the best remaining examples of unimproved hay meadows in Kent.



GL3 Neutral Grasslands

***2020 - 967 groups of GWOs
in 50cm squares***

2025 - 3000 flower spikes

GL3 Neutral Grasslands

**Delivering Priority Habitat Lowland
Meadows**

6.1.1 Biodiverse Grassland

**LM1, 2 & 3 objectives on carbon, water
quality and flood mitigation.**

Forage areas for Common Toad and GCNs

Rich in pollinators, including moths.

Supporting priority species farmland birds.



Anne Tipples



**Using the right plants
from our local flora will aid
long-term survival**

**Hay-spreading Weald-
specific seed**

**Distributing local plug
plants.**



Dyers Greenweed

kew.org



Lending a horticultural hand ...



Anne Tipples

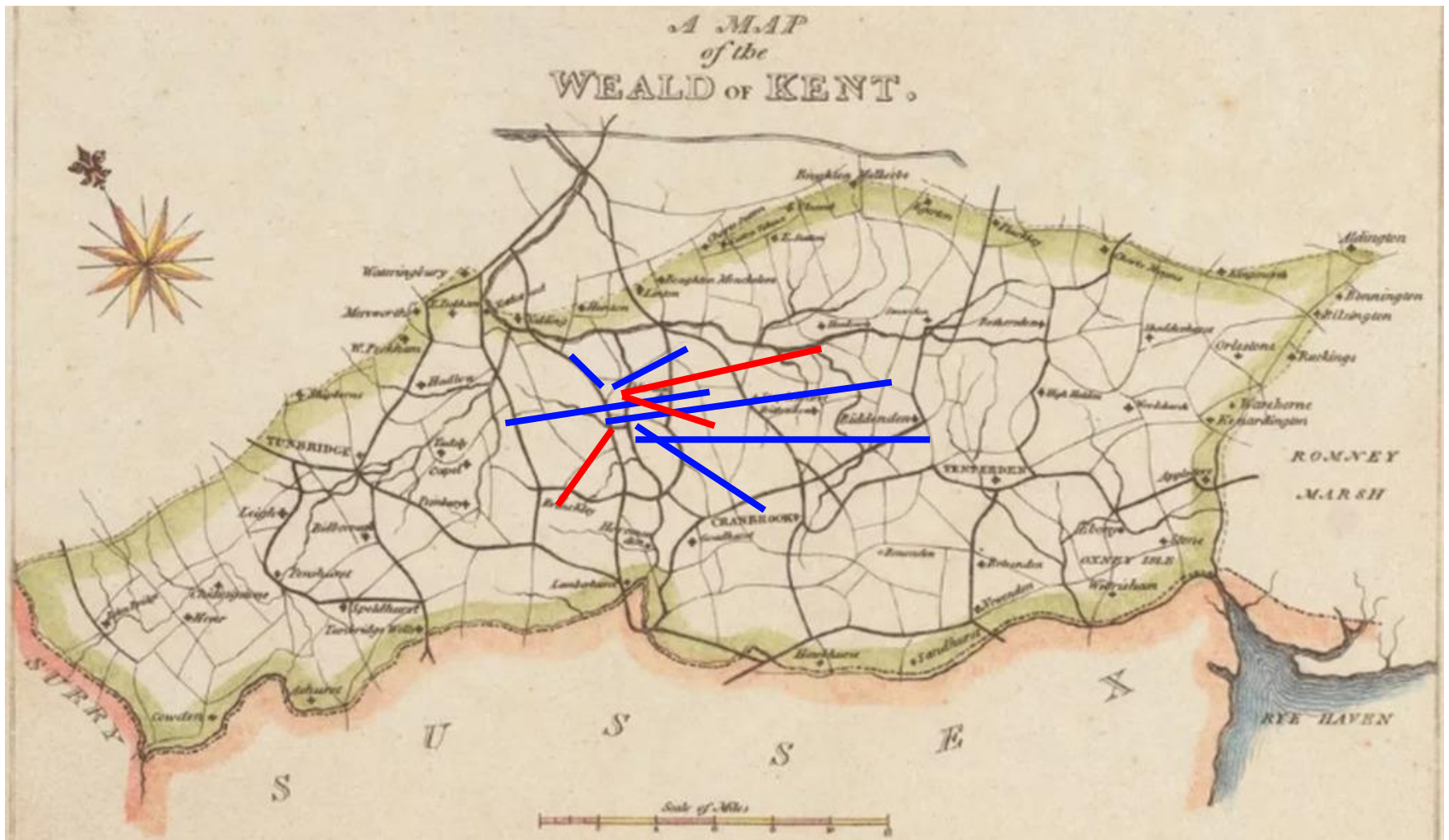


Claire Eckley



Bob Boswell

Chequer (aka Wild Service) Tree
Sorbus torminalis



GL3 Neutral Grasslands –

Using the right plants from our local flora will aid long-term survival

Seed-rich hay made from new meadows sown with Weald origin seed from the High Weald

Rare plants eg Devil's-bit Scabious, raised as plug plants by community volunteers

SPECIES RECOVERY & Evidence



Chas Holt

**SPECIES RECOVERY
& Evidence**

The map displays the Ashford area with various locations and roads labeled. Two red circles highlight specific areas of interest, connected by a red line. The locations are:

- Northwest:** A red circle highlights a yellow area near Shadoxhurst, connected to the main area by a red line.
- Northeast:** A red circle highlights a yellow area near Willesborough, connected to the main area by a red line.

Other labeled locations include Ashford, Kingsnorth, Stone Cross, and various roads like Ashford Rd, Hamstreet Rd, and the M20 motorway.

SPECIES RECOVERY & Evidence



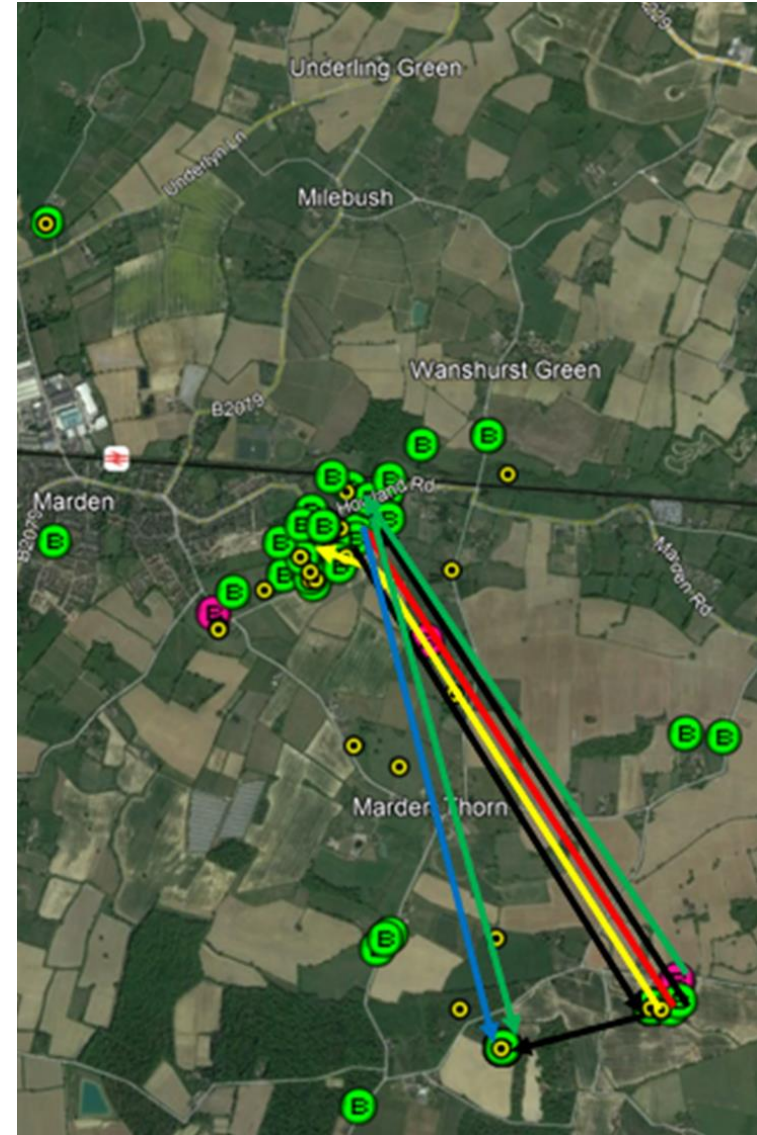
**SPECIES RECOVERY &
Evidence**

**98% decline in 50 years –
still declining (30% of the remaining 2%) in the last 2!**

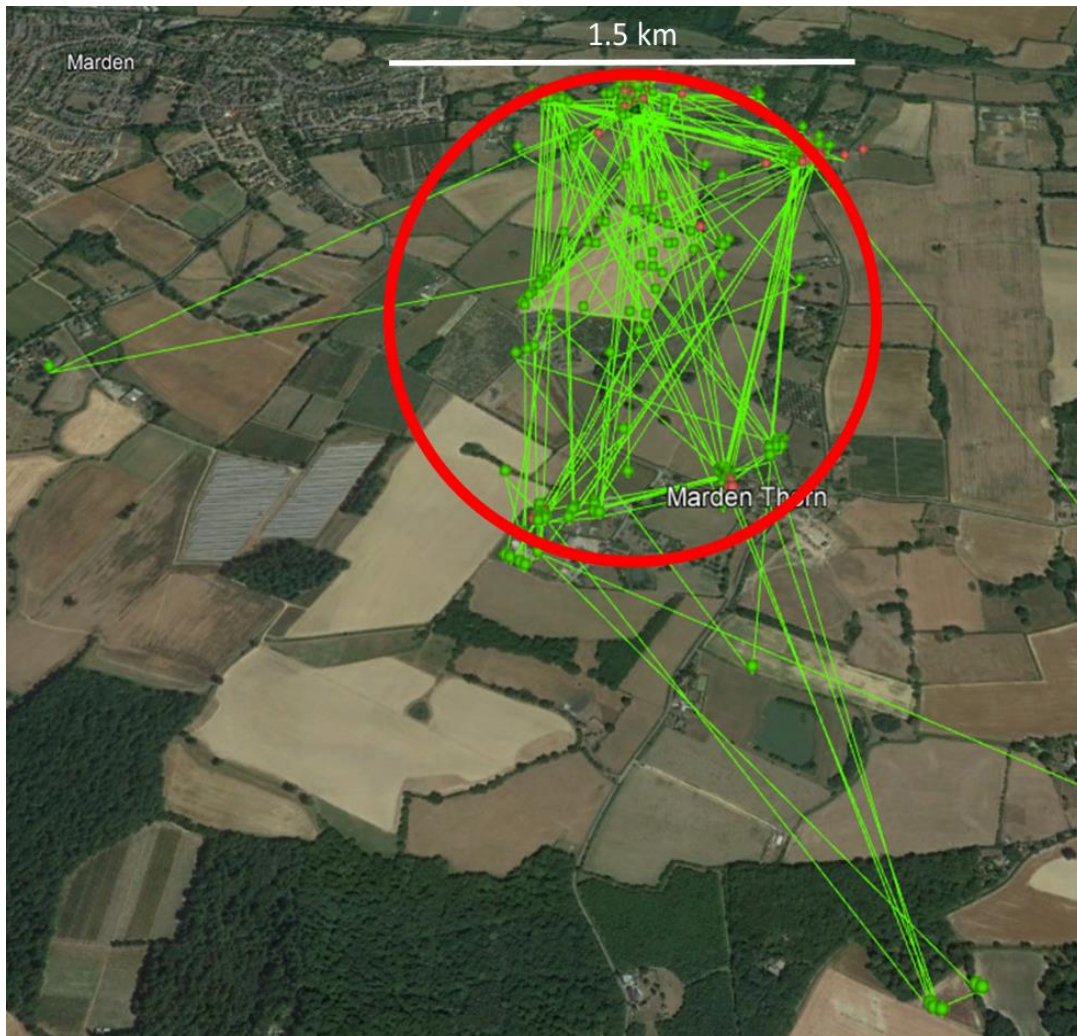


Darren Nicholls

2021



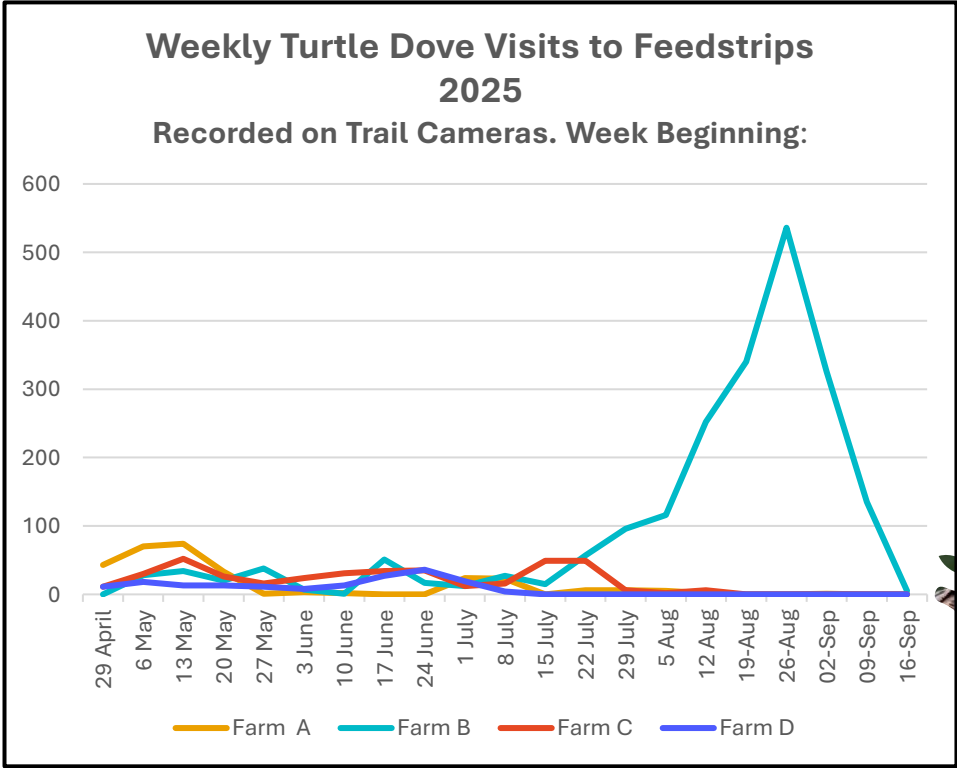
2022 5 colour-ringed birds



2023-24



GPS tagged birds

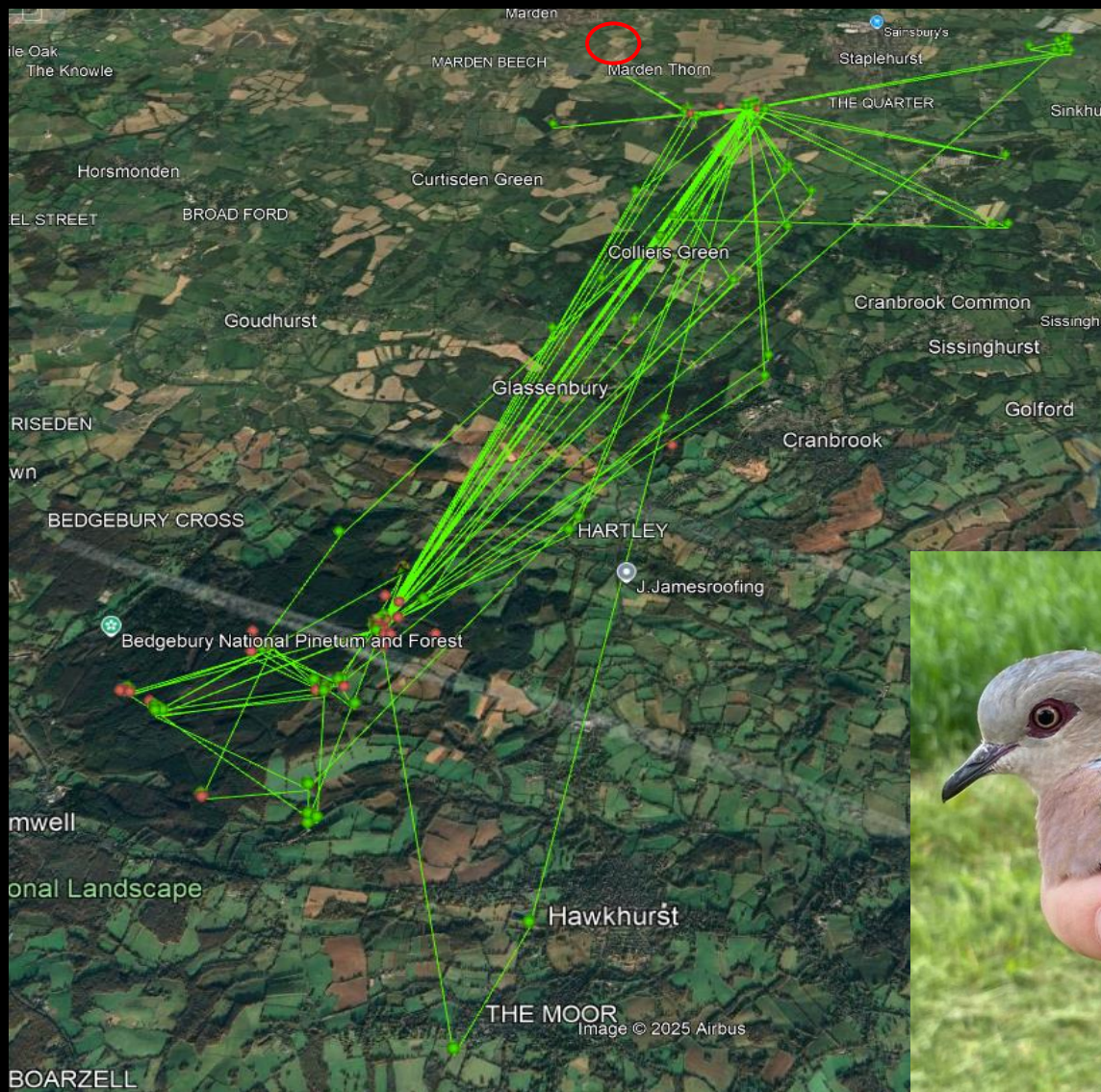


2025



GPS tagged birds

SPECIES RECOVERY & Evidence



2025



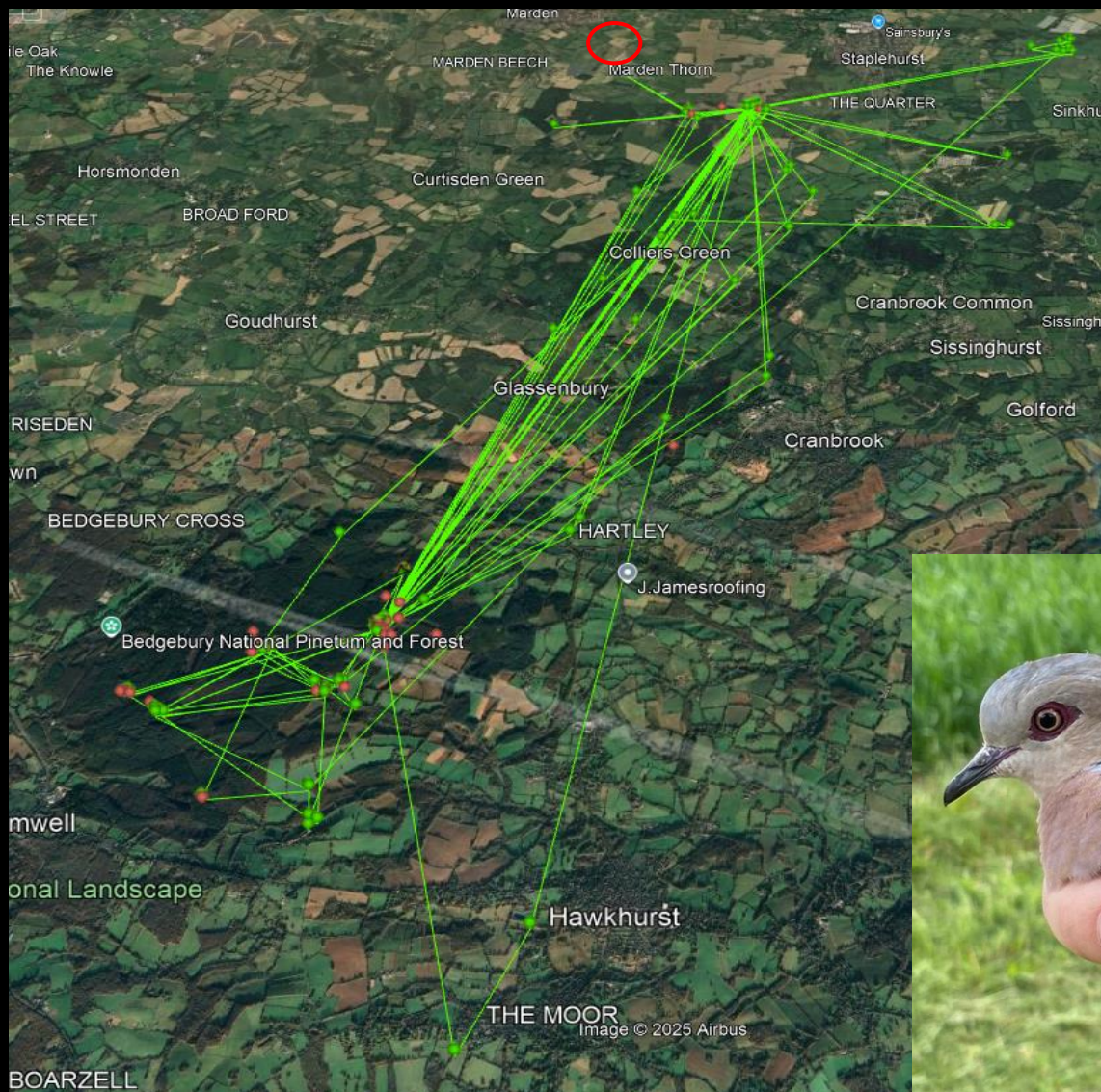
Upper Beult
Farmer Cluster



Ray Morris

SPECIES RECOVERY & Evidence

evidence =
one weald



Ray Morris

2025



Upper Beult
Farmer Cluster



Wildlife Trust