

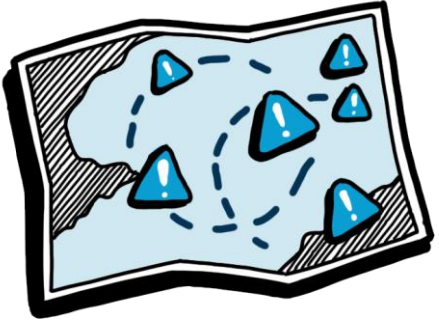
Kent and Medway Local Nature Recovery Strategy



**Kent and Medway
Local Nature
Recovery strategy**

Making space for the county's nature

State of nature in Kent



Of the 3,684 species in Kent that have had their UK threat status assessed, **372 (10%) are threatened with extinction.**

Fragmentation, loss of connectivity, under-management and scrub encroachment have **reduced the area of chalk grassland** in Kent.



Area of land under **conservation management** in Kent **declined by 3.8%** 2016-20.

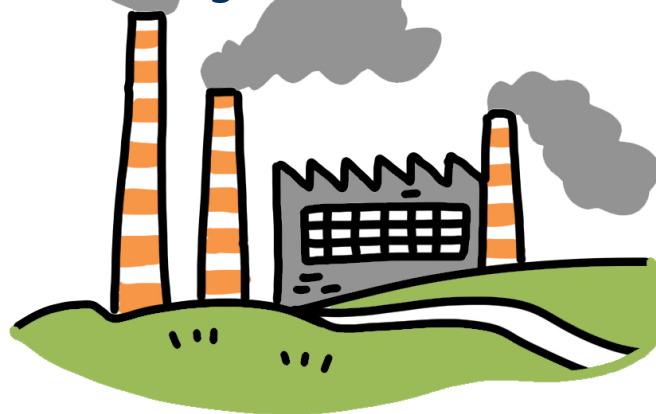


In 2019, **79% of rivers and lakes** monitored in Kent for phosphorous **did not meet the required standard** for good ecological status.



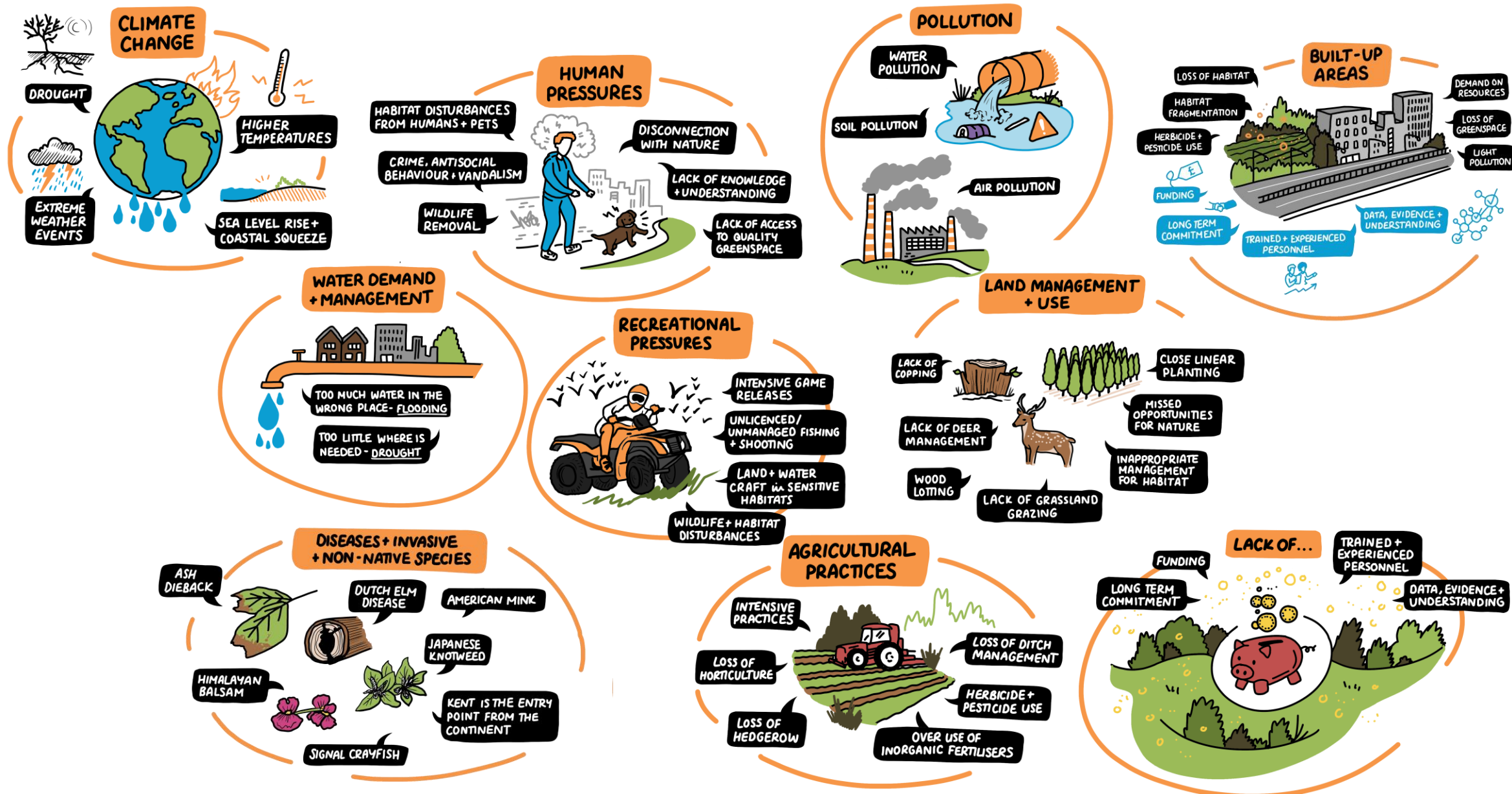
Kent's population is growing at **above average** rates.

Levels of **small particulate air pollution** in Kent are **double** recommended average maximum limit



Only **69% of Kent's SSSIs** in **favourable condition**

Pressures on nature and our wider environment



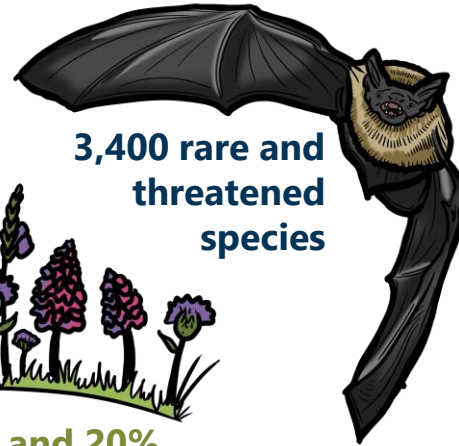
What a natural resource we have!



42 of Britain's 59 butterfly species incl.
two of the rarest – Heath Fritillary
and Duke of Burgundy



5% of the UK's and 20%
of the South East's chalk grassland



3,400 rare and
threatened species



35% of the UK's coastal chalk



Two National Landscapes
98 Sites of Special Scientific Interest
15 Special Areas for Conservation, 7 Special
Protection Areas and 6 RAMSAR
11 Marine Conservation Zones
12 National Nature Reserves



Five of the UK's
seven rarest
bumblebees

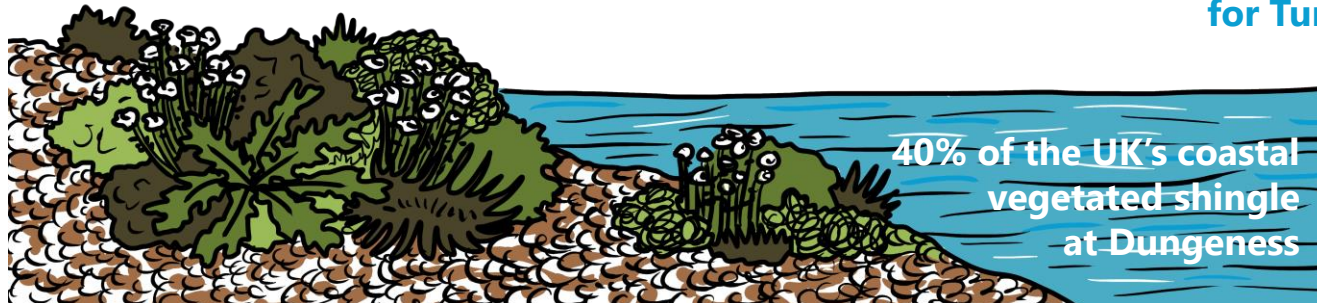


482 Local Wildlife Sites
193km Roadside Nature Reserves
Six Important Bird Areas
Four Important Plant Areas
Four Important Invertebrate Areas

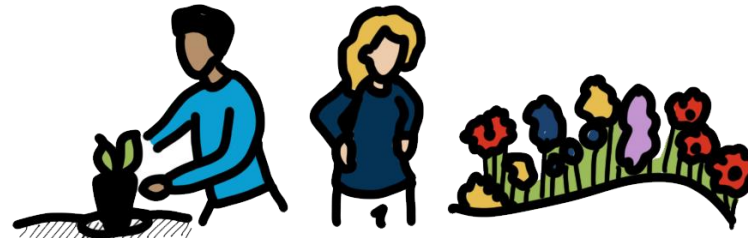
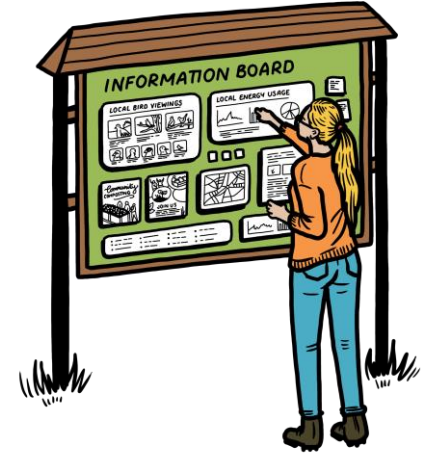
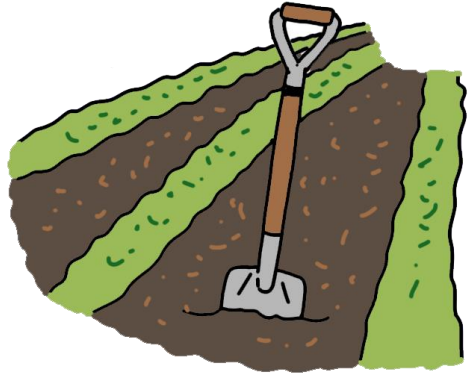
Important stronghold
for Turtle Dove and
Nightingale



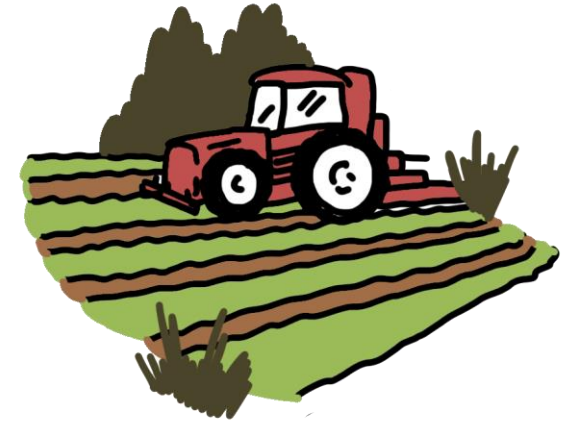
11% of England's ancient
semi-natural woodland



40% of the UK's coastal
vegetated shingle
at Dungeness



And what a wealth of expertise, experience and ongoing action



Kent and Medway Local Nature Recovery Strategy

- Set of agreed priorities for nature recovery, with measures to deliver.
- Shared vision for nature recovery and the use of nature-based solutions in Kent and Medway.
- Framework for joined-up action, developed with those that will be instrumental in its delivery.
- Ambitious but realistic and deliverable plan, linked to supporting mechanisms and finance.
- Spatially framed strategy for nature – focussing action to where its most needed and will deliver the greatest benefits.



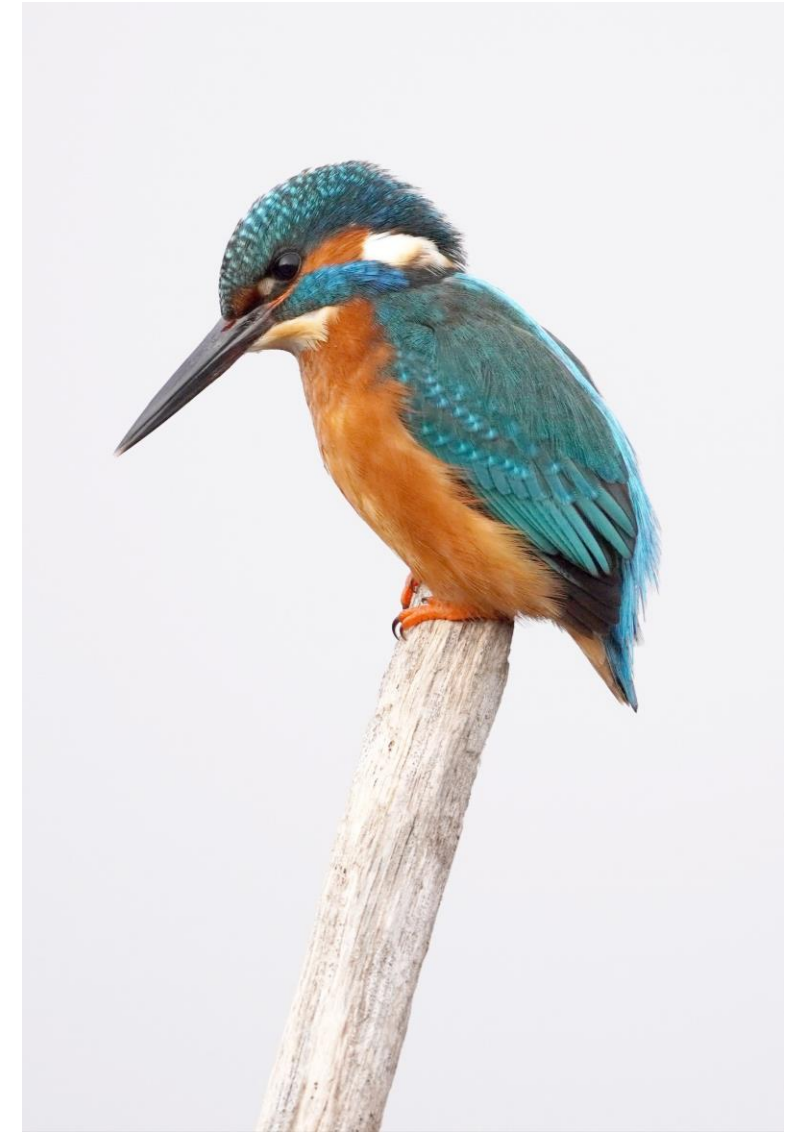
Principles of strategy development

1. Consider the **landscape character**, the **catchment functions** and **ecosystem links** across the county.
2. Focus on **addressing the most significant impacts** arising from the pressures and challenges facing nature.
3. Target efforts to our **most significant and important habitats**, locally and nationally.
4. Concentrate on **habitats that are threatened** in extent, degraded in quality or are at risk from climate change.
5. Give detailed consideration to the needs of **threatened species**, identifying bespoke interventions needed and ensuring that any management considers species requirements within the habitats they're associated with.



Principles of strategy development

6. Aim to support both the **local and national priorities and ambitions** for nature, green and blue infrastructure and the wider environment.
7. Identify **actions and delivery mechanisms** needed to achieve the priorities for the county's nature, and target these to the areas of the county that are in **most need of action** and/or **wider benefits** can be delivered.
8. Maximise opportunities for delivering **nature-based solutions** by directing action to where the design of nature recovery action can also deliver environmental improvements that are needed in that area.



THE DEVELOPMENT OF LNRS WAS A *Collaborative* APPROACH, WITH STAKEHOLDERS INCLUDING:
 FARMERS + LANDOWNERS, ENVIRONMENTAL / WILDLIFE NGOS, COMMUNITY GROUPS, RESIDENTS,
 BUSINESSES, DEVELOPERS, BIODIVERSITY RECORDING GROUPS, TOWN + PARISH COUNCIL, LOCAL GOV.,
 ENVIRONMENTAL GOVERNMENT AGENCIES, RECREATIONAL / ACCESS, UTILITIES, TRANSPORT,
 EDUCATION, MARINE, HEALTH

OVER 12 MONTHS, WE HELD
 WORKSHOPS, ONLINE BRIEFINGS
 + QUESTIONNAIRES THAT ALLOWED
 THE PARTICIPATION OF
 OVER 1000 PEOPLE IN TOTAL

THERE WAS A GOVERNANCE + DELIVERY STRUCTURE THAT OVERSAW
 THE PROCESS:

8 LNRS PRESENTS a
 STATEMENT of BIODIVERSITY
 PRIORITIES, with DELIVERY
 DIRECTED by the LOCAL
 HABITAT MAP...

SUPPORTING
 AUTHORITIES

THE COUNTY'S PLANNING
 AUTHORITIES + NATURAL
 ENGLAND

PROJECT
 BOARD

STRATEGIC +
 POLITICAL
 OVERSIGHT

DELIVERY
 GROUP

TECHNICAL + SECTORAL
 ADVICE, STEERING A
 DELIVERABLE STRATEGY

WIDER STAKEHOLDER
 GROUP

INPUTTING VIA WORKSHOPS + DEDICATED
 MEETINGS TO SHARE INFORMATION +
 OPINIONS + PARTICIPATE IN
 DEVELOPMENT OF STRATEGY

TECHNICAL
 ADVISORY
 GROUPS

- DATA, EVIDENCE + MAPPING
- SPECIES RECOVERY
- LANDOWNER + FARMER
- ENGAGEMENT + COMMUNICATION
- COUNTRY'S EXPERTS - PROVIDING
 SPECIFIC TECHNICAL GUIDANCE TO
 ENSURE SOUNDNESS OF THE STRATEGY

7

COLLECTIVELY the MAPPED POTENTIAL
 MEASURES CREATE the AREAS that
 COULD BECOME PART of PARTICULAR
 IMPORTANCE for BIODIVERSITY...

1

MAP of AREAS of PARTICULAR
 IMPORTANCE for BIODIVERSITY
 (APIB) WAS ESTABLISHED...

2

IDENTIFIED THE
 PRESSURES + CHALLENGES
 FOR BIODIVERSITY...

3

CREATED A LONGLIST OF
 OUR PRIORITIES FOR
 NATURE...

4

REFINED LONGLIST
 USING SELECTION
 CRITERIA to AGREE on the
 LNRS PRIORITIES...

5

IDENTIFIED POTENTIAL MEASURES
 (ACTIONS) THAT WOULD
 DELIVER THE LNRS...

6

WE MAPPED THE
 POTENTIAL MEASURES to WHERE
 THEY WOULD DELIVER the
 GREATEST BENEFITS...

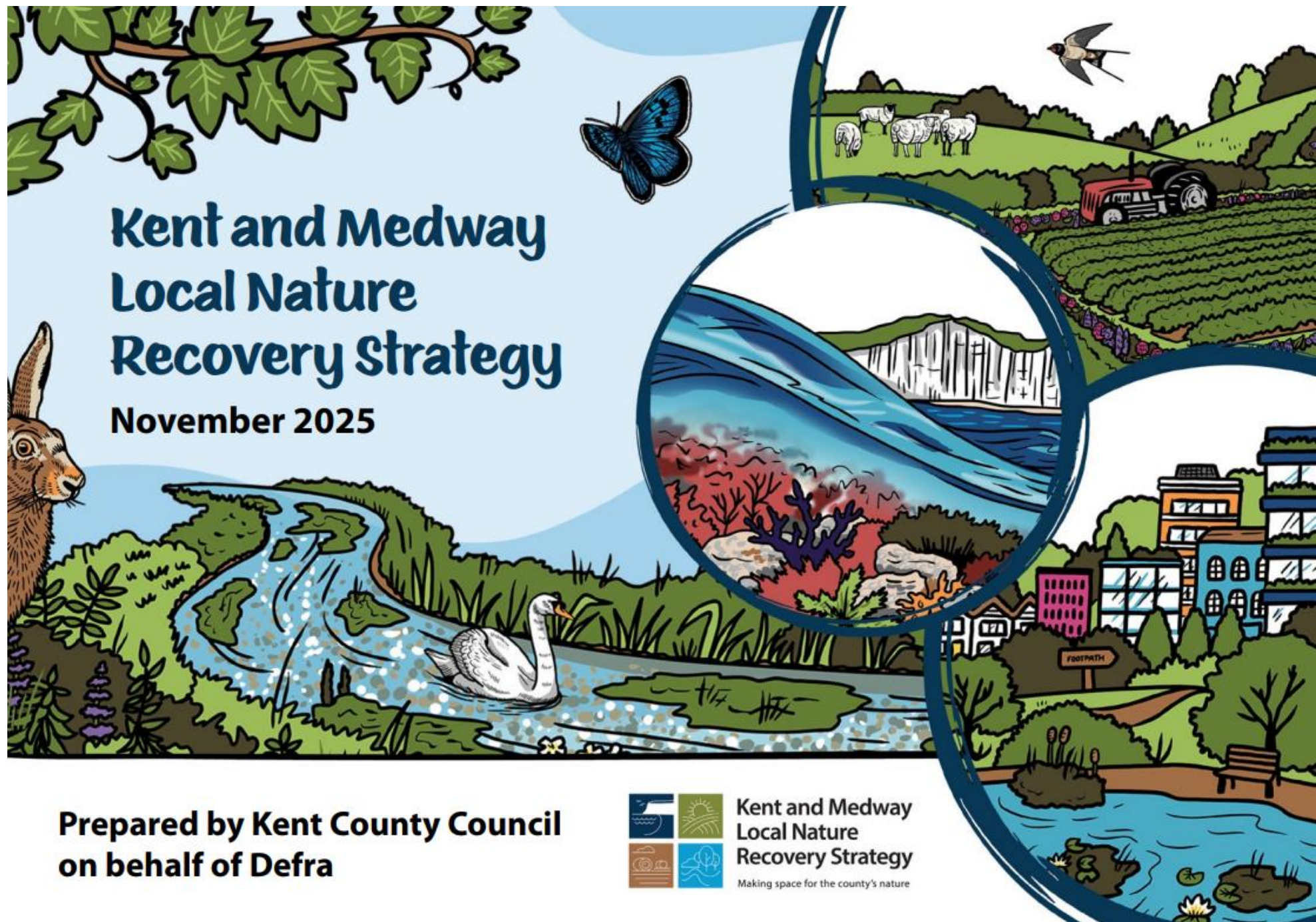


Making Space
 for Nature
 in Kent and Medway



Stakeholder engagement >1000 individuals





Kent and Medway Local Nature Recovery Strategy

November 2025

Prepared by Kent County Council
on behalf of Defra

PRINCIPLES

OF THE LNRS

BETTER

IMPROVE THE *Quality* OF OUR EXISTING HABITATS & ENSURE THEY IN A HEALTHY & FUNCTIONING STATE BY APPLYING + RESOURCING BETTER & APPROPRIATE MANAGEMENT OF THEM. WE ALSO NEED TO BETTER CONSERVE & SAFEGUARD WHAT WE ALREADY HAVE



BIGGER

INCREASE THE **SIZE** OF OUR MOST *Valuable* & *IMPORTANT* HABITAT SITES, NOT ONLY EXTENDING BUT BUFFERING THEM, TO PROTECT THEM FROM THE PRESSURES OF **HUMAN INFLUENCES**



MORE

THROUGH *HABITAT RESTORATION* & *Creation*, ESTABLISH NEW, NATURE-RICH SITES THAT NOT ONLY PROVIDE MORE SPACE FOR NATURE BUT ALSO PROVIDE *CONNECTIVITY* BETWEEN EXISTING CORE SITES



JOINED UP

ENHANCE **CONNECTIONS** BETWEEN, AND JOIN UP, SITES BY IMPROVING THE *Quality* OF LAND BETWEEN THEM, CREATING NEW *PHYSICAL CORRIDORS* & ESTABLISHING **STEPPING STONES**



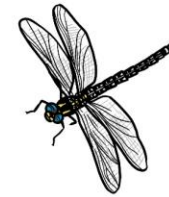
LAND MANAGEMENT + LAND USE

INCREASE THE NUMBER OF LANDOWNERS, LAND MANAGERS & FARMERS USING *nature friendly* & *HABITAT-SENSITIVE* LAND MANAGEMENT & LAND-USE PRACTICES, RECOGNISING THE CRUCIAL ROLE THEY PLAY IN HELPING TO DELIVER A **BETTER, MORE COHERENT** & **RESILIENT** WILDLIFE NETWORK ACROSS THE COUNTY



NATURE BASED SOLUTIONS

WORK WITH *Nature* & USE NATURAL PROCESSES TO TACKLE SOME OF THE SOCIO-ECONOMIC CHALLENGES OUR COUNTY FACES, **MAXIMISING THE BENEFITS** OF *NATURE RECOVERY*





**Urban
environments**



**Coastal
habitats**



Species



Connectivity



**Nature-based
solutions**



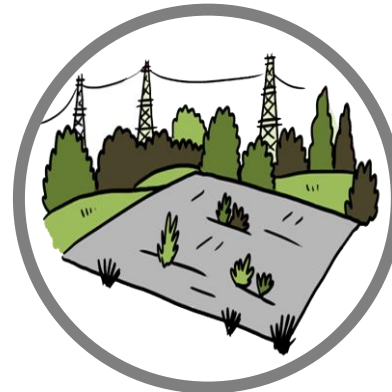
**Land management
and use**



**Freshwater
habitats**



**Woodland, trees
& hedgerows**



**Successional
habitats**

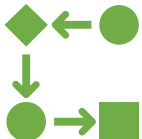
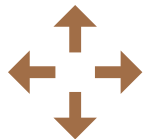


**Species-rich
grassland**

Strategy vision - 10 ambitions

Priorities, potential measures and species

- **Priority** - the outcome we want to see for nature. In most cases, these distil the broad ambitions down to specific habitat types.
- **Potential measures** - the proposed actions to deliver the priority; they must be practical and achievable. Critically these inform biodiversity net gain delivery.



- **Priority species** – the priority species that will benefit from the priority's delivery.

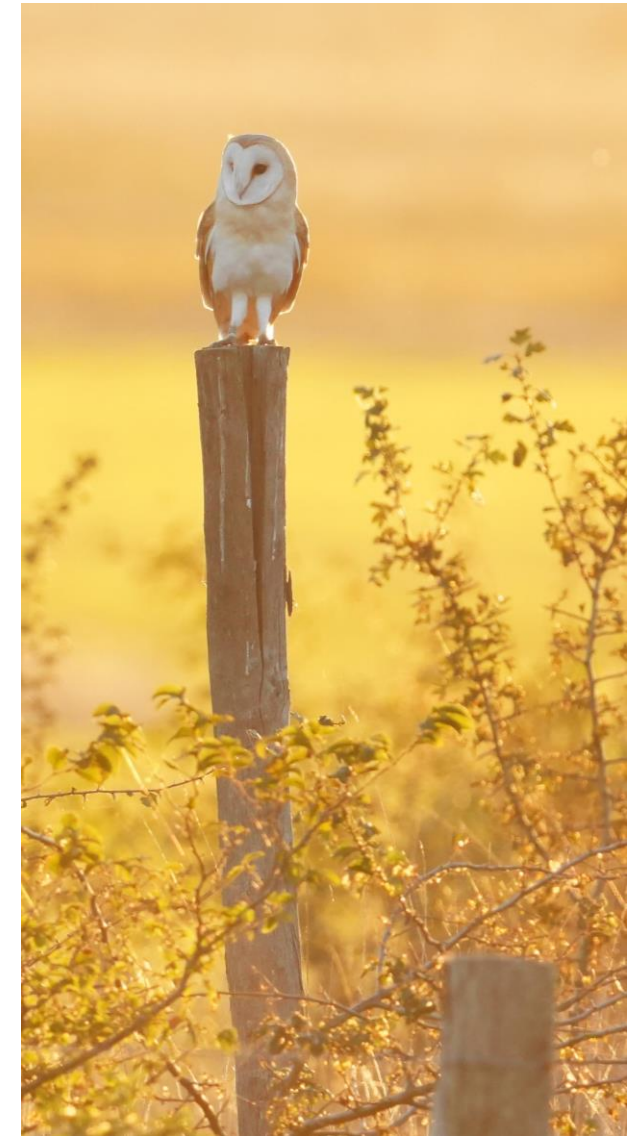


Kent and Medway
Local Nature
Recovery strategy

Making space for the county's nature

Sitting outside of formal scope of the Strategy

- **Wider measure** – proposed actions which are similarly beneficial over wide areas. Collectively, wider measures identify areas of additional opportunities for nature recovery but are not a part of the formal Strategy mapping.
- **Land management and land use principles** – best practice and/or recommended approaches that should underpin any action taken for the delivery of the priority.
- **Supporting measures** – these largely relate to supporting mechanisms, processes and functions that are considered critical to the delivery of the identified potential measures for habitats and species.
- **Data, evidence and mapping needs** – what is needed to better inform the priority's delivery and/or will allow improved mapping during the next iteration of the Strategy.





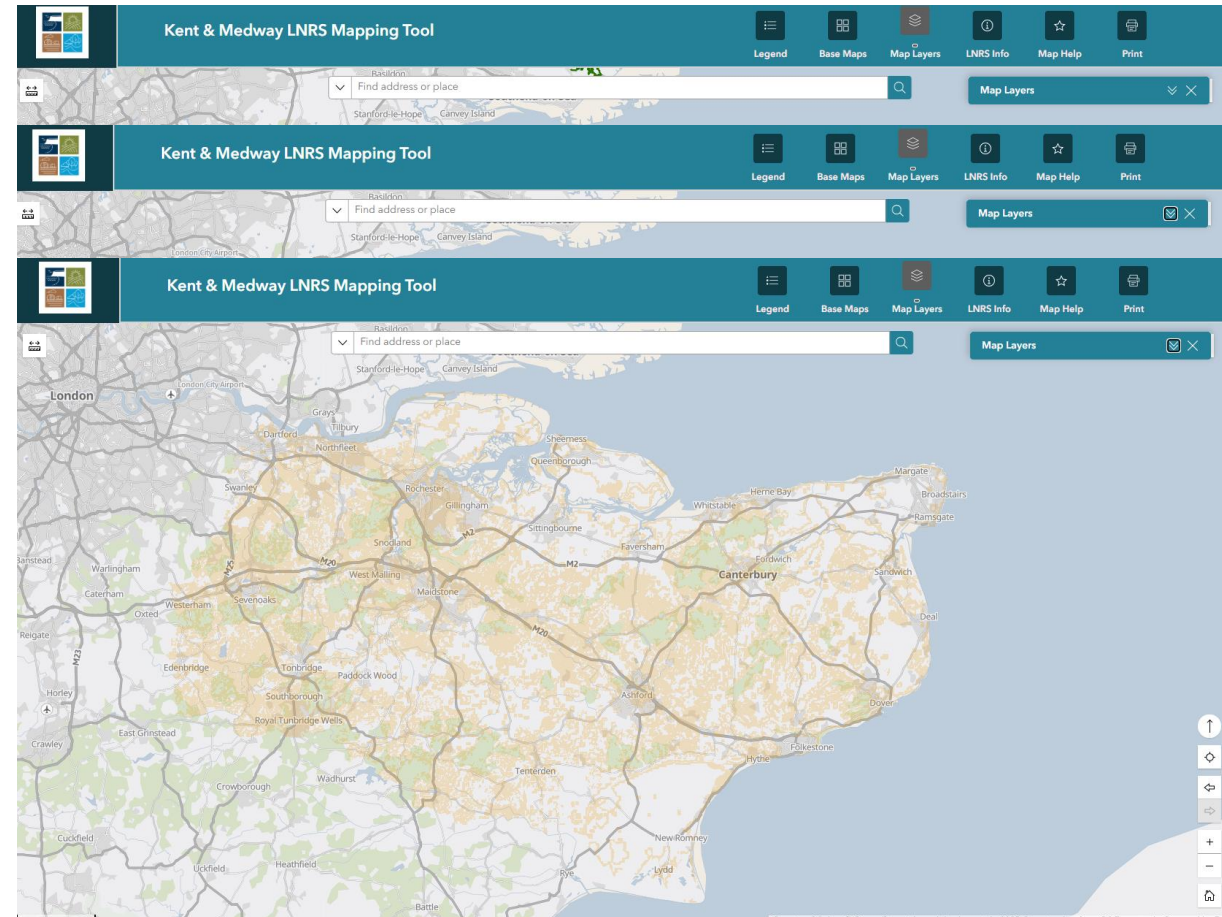
Strategy mapping

- Strategy is spatially framed, mapping areas which are, or could become, of particular importance for nature recovery.
- **Local habitat map** - a map of the Strategy area that provides a clear visual way for groups and individuals to understand the areas which are, or could become, of particular importance for biodiversity and the environment to target nature recovery action.



Local habitat map components

- **Areas of particular importance for biodiversity** – areas already afforded some level of protection and management.
- **Potential measures mapping** – targeting the proposed action to where it will deliver the greatest impact on nature recovery.
- **Areas that could become of particular importance for biodiversity** – locations highlighted through the combined potential measures mapping as priorities for investment to support the recovery of nature in the county (excluding areas already within the APIB).





Kent & Medway LNRs Mapping Tool



Legend



Base Maps



Map Layers



LNRS Info



Map Help



Print

Find address or place



Map Layers



WTH6.2 Wet woodland - create ponds

Zoom to

Priority: Wet woodland

Measure: Creation of ponds within woodlands, and naturally regenerated riparian zones.

Strategy Principle: More

Delivery Preference: 3

This is a **potential measure** and consequently may be eligible for the strategic significance uplift for biodiversity net gain. For the latest government guidance on LNRS and strategic significance see <https://www.gov.uk/government/collections/biodiversity-net-gain#calculate->

< >

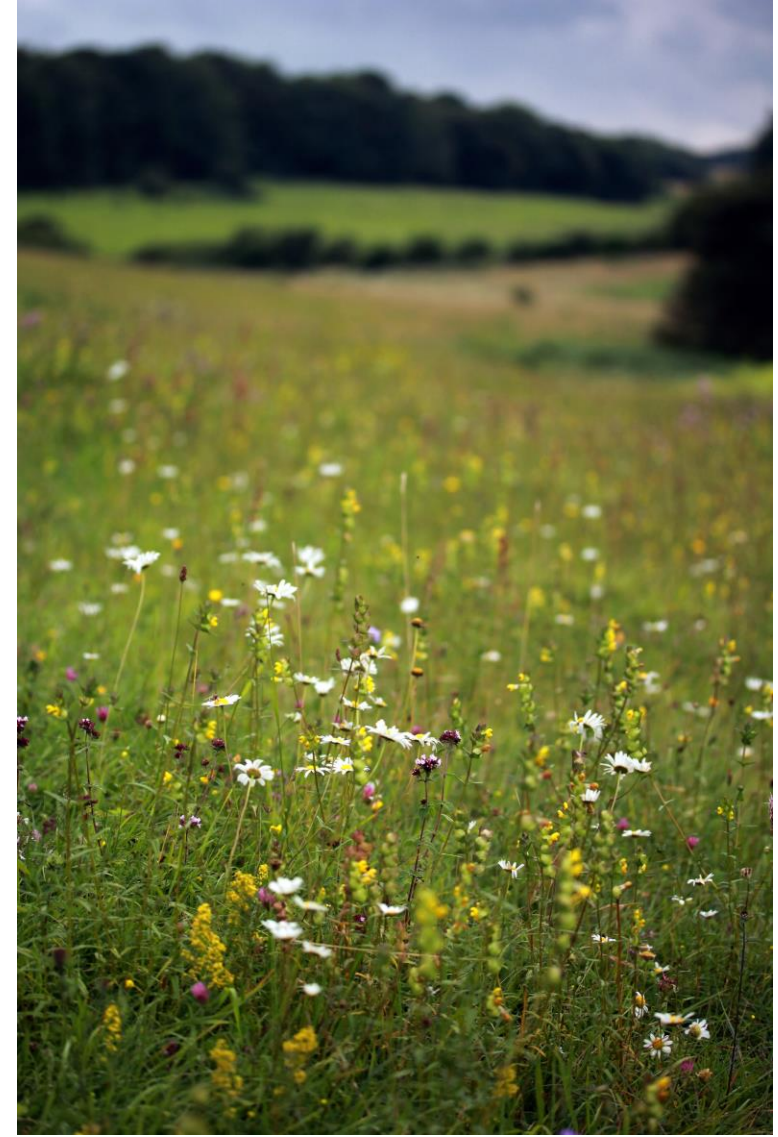
3 of 7

5 km

Contains OS data © Crown Copyright and database right 2025 Contains data from OS Zoomstack Powered by Esri

Onto delivery – turning ambition into action

- Strategy provides a comprehensive guide to nature recovery that will present many strategic and financial opportunities to farmers, landowners, planners, developers, community groups and others in taking forward the measures.



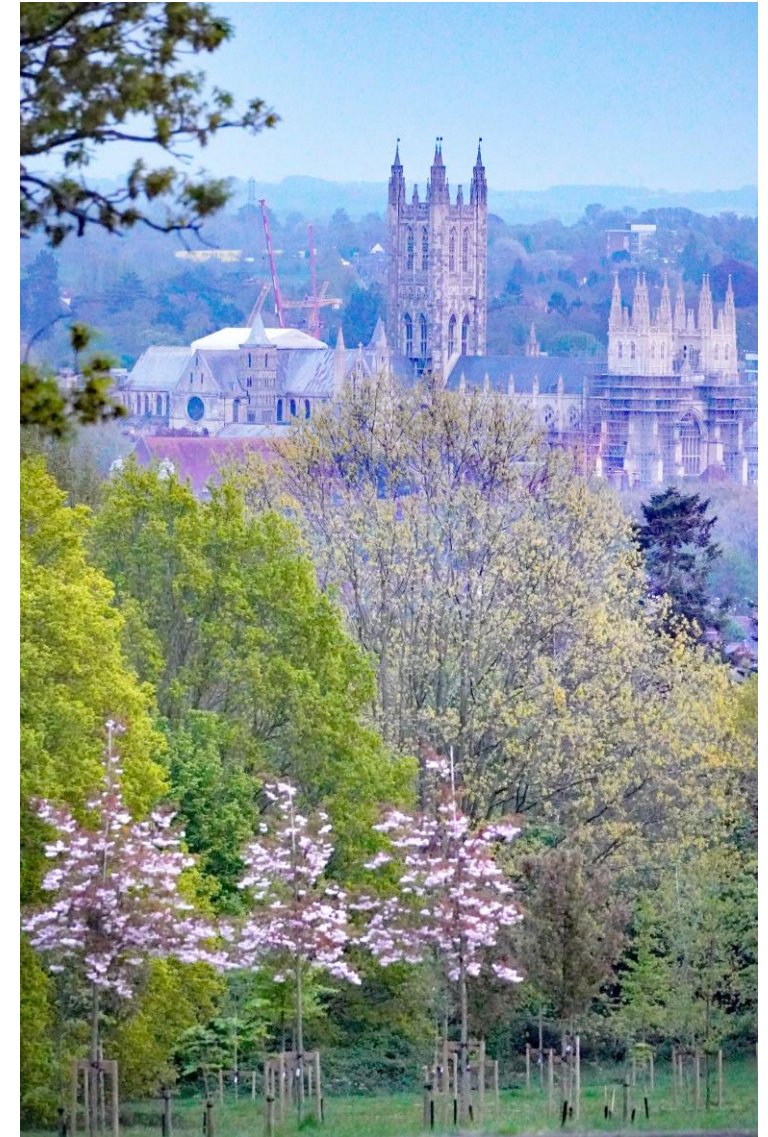
What Strategy doesn't do

- Dictate actions or instruct their implementation – but it identifies potential measures that could be taken to support the recovery of nature.
- Force landowners and managers to make changes to the way they use and manage the land or their operations – but action will be incentivised by linking delivery of the Strategy priorities to a wide range of funding.
- Prevent development – but it helps planning authorities to put nature at the heart of land use planning and development management decisions.



Delivery supported by

- A new duty on all public authorities to have regard to relevant Local Nature Recovery Strategies, including within local plan development.
- A multiplier incentive within biodiversity net gain calculations, to recognise the added impact of taking action where the Local Nature Recovery Strategy proposes.
- Integration of Local Nature Recovery Strategies into the planning system, so that areas of greatest potential for nature recovery can be better reflected in planning decisions
- Funding and investment for specific activities in locations proposed by Local Nature Recovery Strategies.



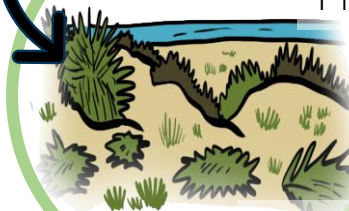
Lead and convene a delivery partnership



Catchment Partnerships



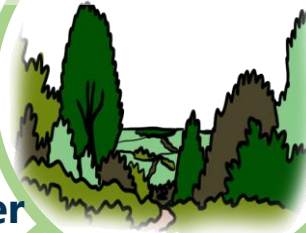
Coastal & Marine Officer – Louise Lawton



Coastal partnerships

Plan Sea

Countryside Management Partnerships



Plan Tree

Nature Recovery Officer – trees Anna Ritchie

Nature Recovery Officer – urban Katie Pattison



Planning authorities group

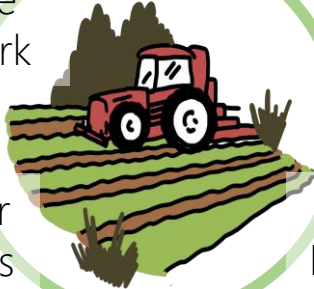
Countryside Management Partnerships

Nature Recovery Partnership Officer – Chris Drake



Nature Recovery Officer – rural Rachel Boot

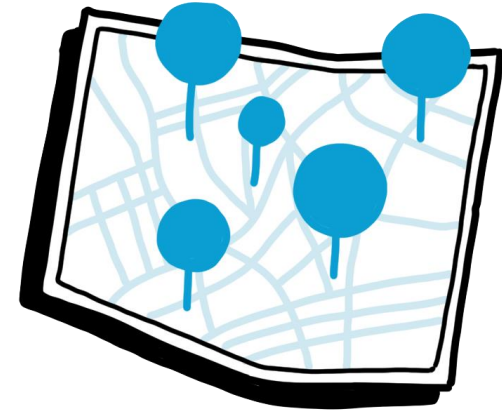
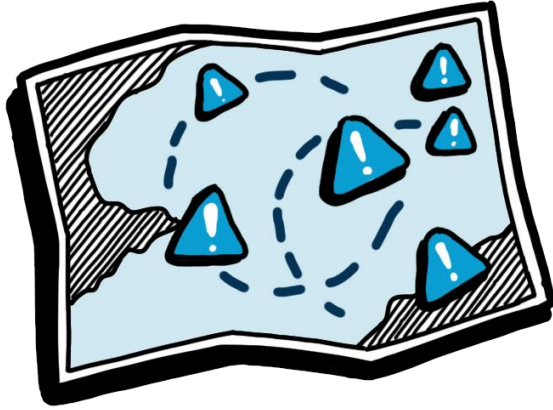
Land advice network



Farmer clusters

Countryside Management Partnerships

Embed LNRS into local decision making



Support local planning authorities to fulfil the requirements of the 2025 National Planning Practice Guidance:

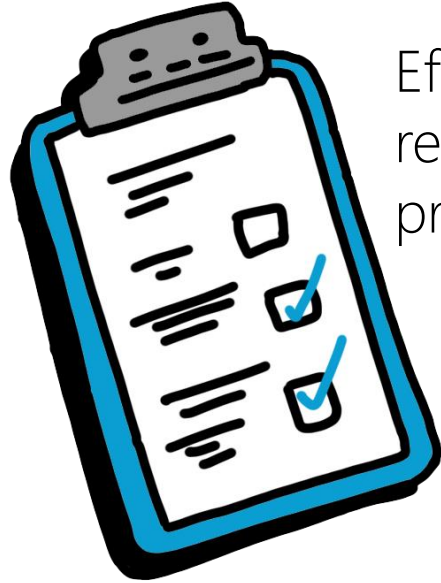
- Use of Strategy priorities to inform how a Local Plan contributes to, and enhances, the local and natural environment.
- Use of Strategy mapping to inform the Local Plan's identification, mapping and safeguarding of areas for habitat management, enhancement, restoration or creation.
- Use of Strategy mapping to identify areas considered of greater importance for biodiversity, which would benefit from stronger safeguarding.

Identify strategic projects and facilitate project development

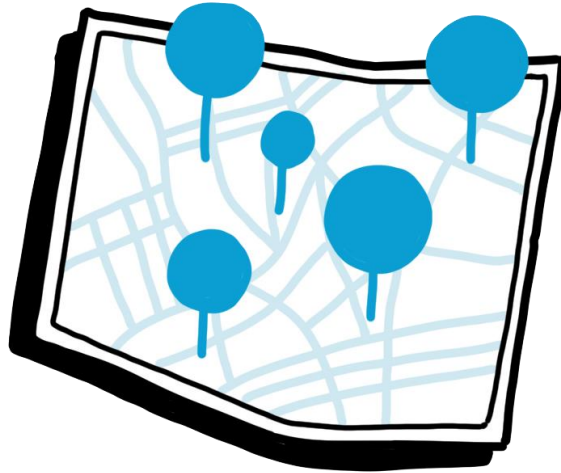
- Work with partners to identify strategic projects that would benefit from facilitation.
- Support potential projects to become investment/funding-ready.
- Support delivery partners and stakeholders to embed LNRS across their work.
- Maintain project record and project pipeline.
- Monitoring of measures and priorities delivery.



Monitor and report on delivery of LNRS priorities



Efficient and accurate
recording against
priorities



Monitor the county's habitat creation and
restoration, management and protection actions.



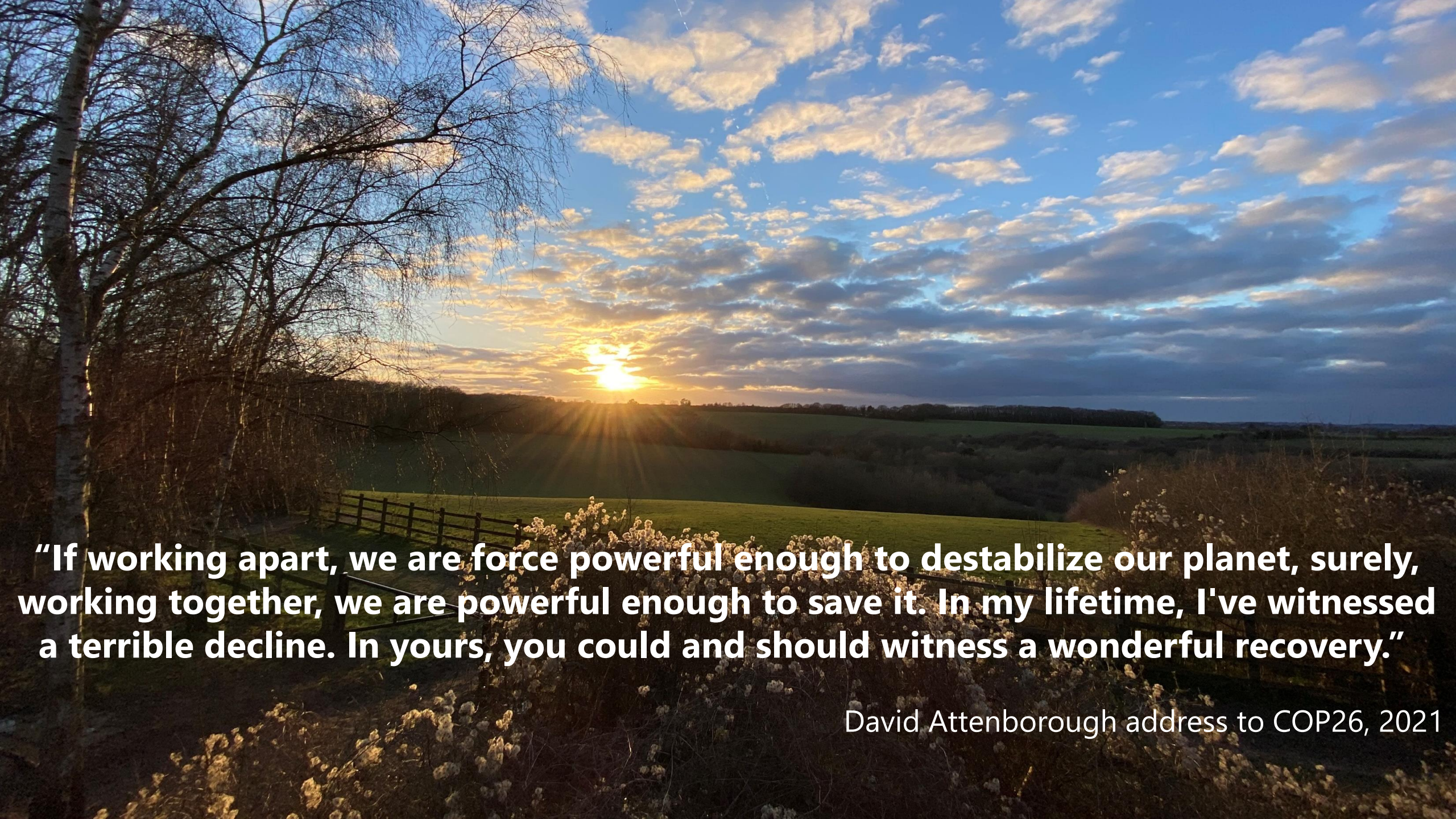
Report, reflect, revise

Online at www.naturerecovery.org.uk



**Kent and Medway
Local Nature
Recovery strategy**

Making space for the county's nature



“If working apart, we are force powerful enough to destabilize our planet, surely, working together, we are powerful enough to save it. In my lifetime, I've witnessed a terrible decline. In yours, you could and should witness a wonderful recovery.”

David Attenborough address to COP26, 2021