

A map of Kent, England, with a large area highlighted in a darker green color, representing the landscape-scale nature recovery corridor. The map shows the coastline, major roads, and rivers. The highlighted area covers a significant portion of the county, from the coast in the south to the inland areas in the north.

A LANDSCAPE-SCALE NATURE RECOVERY CORRIDOR FOR NORTH KENT

INTRODUCING...

KENT
NATURE RECOVERY

**CHALK
TO COAST**

PEOPLE – PLACE
NATURE

FOUNDING PARTNERS



Guy Nevill



Marian Boswall



Tom Gore



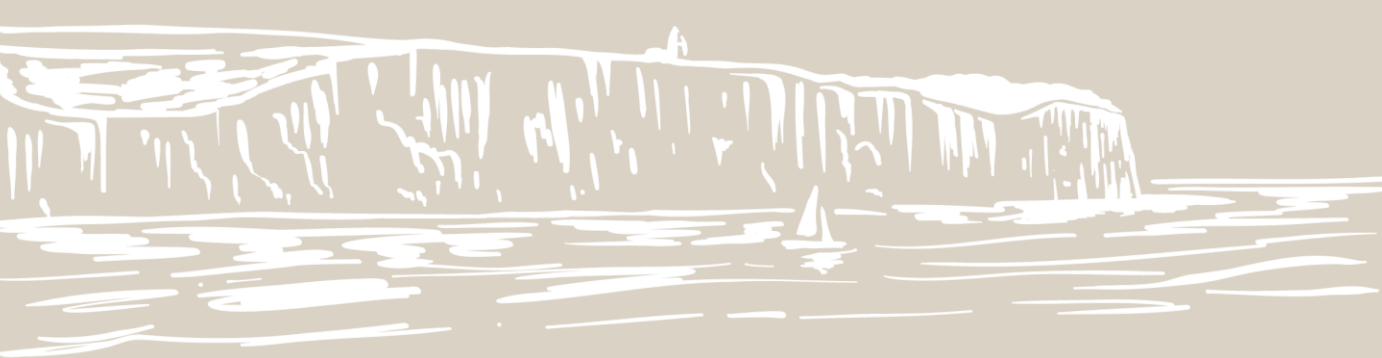
Gareth Fulton

WHAT IS CHALK TO COAST?



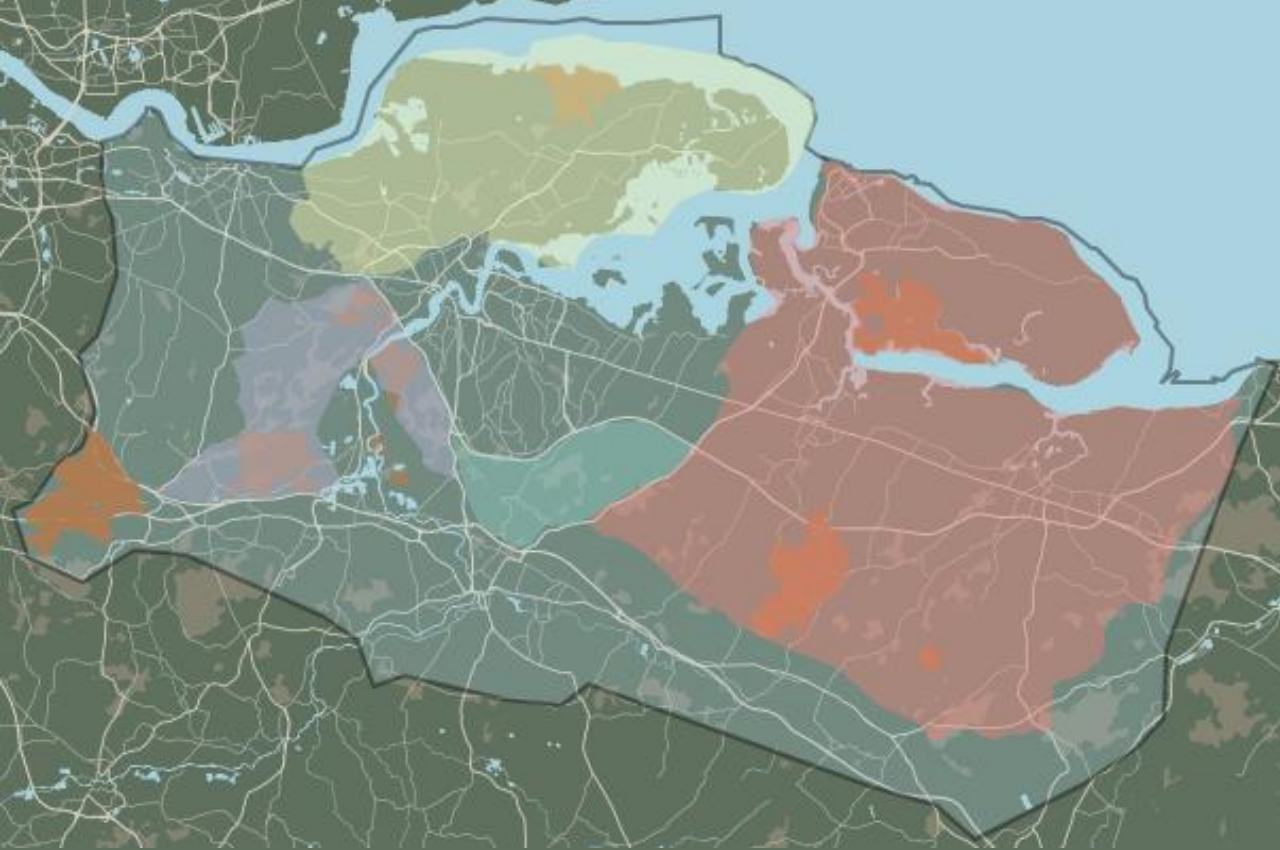
THE MISSION

Our aim is to protect nature for the many, creating a series of **continuous nature corridors** which enable **wildlife to move** through the landscape more easily – and in doing so, tackle **biodiversity loss**, support **rural economies** and enhance **local communities**.



BACKGROUND

- Modelled on successful landscape-scale initiatives like Weald to Waves in Sussex.
- The vision is to connect the North Downs' chalk ridge to the coastal estuaries, between Ashford, Whitstable, Ebbsfleet & Sevenoaks.
- A farmer-landholder led initiative, with founding members from the North Kent farmer clusters.
- We can't do this without the support of landholders, it relies on collective collaboration.
- Aim to unlock new income streams, rewarding farmers who manage their land for nature.



Three North Kent Farmer Clusters:

- Swale
- Hoo Peninsula
- North Kent Downs



Natural corridors through the landscape:


- Waterways & ponds
- Bee lines
- Green corridors
- Hedgerows

WHAT'S THE NEED?



ECOLOGICAL, CLIMATE, SOCIAL & ECONOMIC DRIVERS:

- **Biodiversity Loss:** The UK is one of the most nature-depleted countries in the world.
- **Habitat Connectivity:** Linking fragmented habitats allows wildlife to move, breed, and adapt to changing conditions, especially under climate stress
- **Ecosystem Restoration:** Restoring entire ecosystems (e.g. chalk grasslands, wetlands, woodlands) improves soil health, water quality, and pollination services.
- **Climate Change Resilience:** Restored landscapes absorb more carbon, reduce flood risk and are more resilient to extreme weather and temperature shifts.
- **Access to Nature:** North Kent communities are some of the most socially and environmentally deprived in the nation. Landscape recovery improves access to nature, benefiting mental health and community wellbeing.
- **Economic Dependence on Nature:** Over £1.2 trillion — around 15% of the UK's GDP — is directly reliant on natural ecosystems and the services they provide. Protecting and restoring nature underpins economic and food security.

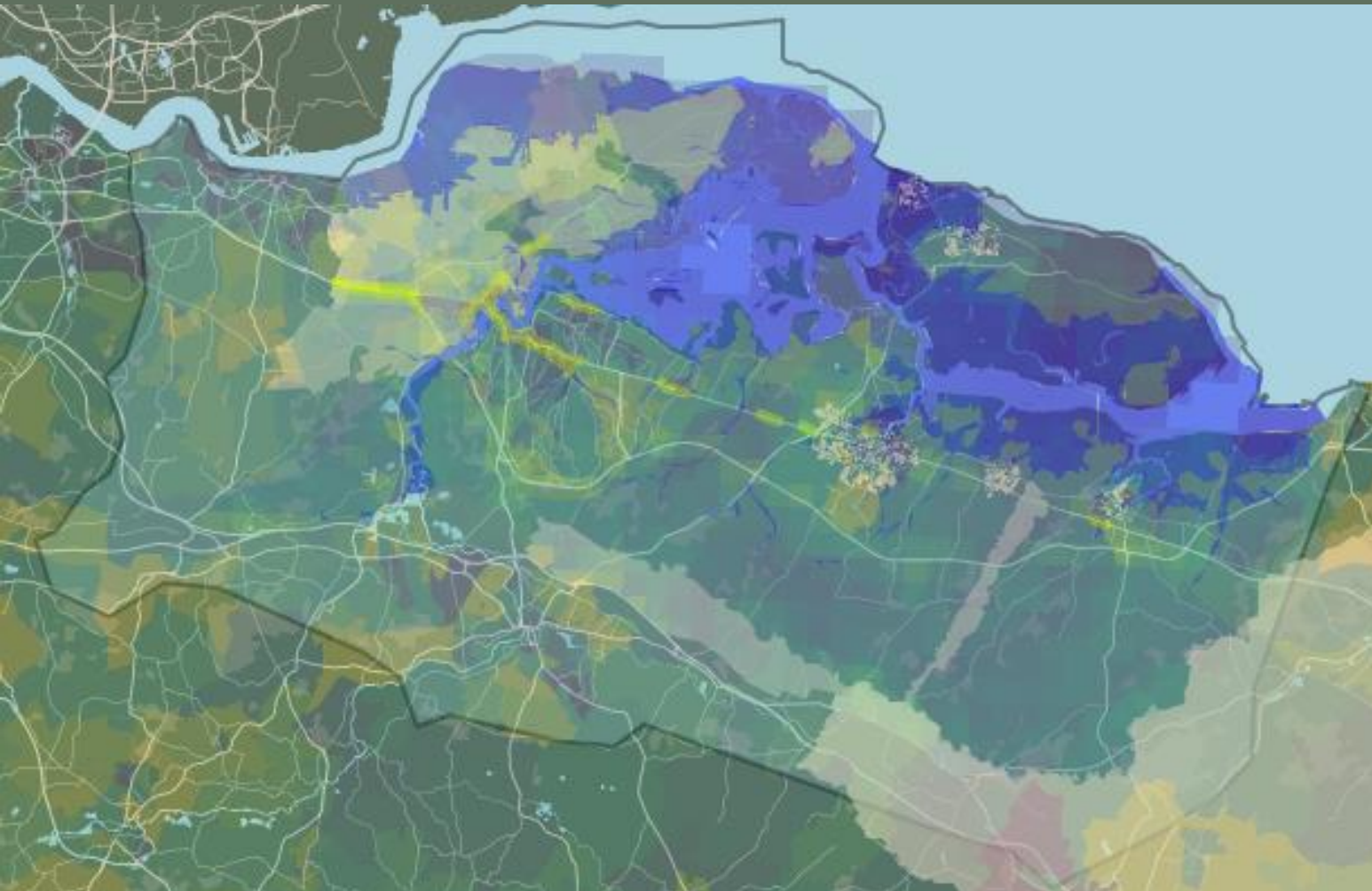


A healthy environment rich in nature is not a luxury, it's fundamental to our existence. The habitats wildlife needs to thrive are also what people need for clean air, clean water, for flood defence, for natural places to visit that bring health benefits as well as inspiration and joy.

Lawton Report

- Ancient Woodland
- Rivers & Estuaries
- Chalk Grassland
- Coastal & Wetland
- SSSI
- RAMSAR
- SAC & SPA
- Nature Reserves

- Ancient Woodland
- Rivers & Estuaries
- Chalk Grassland
- Coastal & Wetland
- SSSI
- RAMSAR
- SAC & SPA
- Nature Reserves



Conversely, it also suffers from issues related to:

- Habitat fragmentation
- Flooding
- Water quality & abstraction
- Air, noise & light pollution
- Urban heating
- Areas of high Socio-Economic Deprivation

WHY FARMER & LANDHOLDER LED?

- **Land Stewards:** Farmers and landholders are the custodians of Kent's landscape. Real, lasting nature recovery can only succeed if it works with those who manage the land and know it best.
- **Flexible by Design:** Each holding contributes in a way that fits its farm system, soil type, and business priorities.
- **Partnership, Not Prescription:** We work collaboratively to identify opportunities for habitat restoration, regenerative practices, and new income streams.
- **Shared Benefits:** Restoring nature brings tangible on-farm gains — from improved soil and water management to diversification and access to environmental markets.
- **Stronger Voice:** By joining together, landholders can influence funding, policy, and private investment across the landscape — ensuring farmers lead the conversation, not follow it.
- **Legacy for the Future:** A coordinated, farmer-led corridor builds resilience for the next generation of land stewards.

RISKS & CONSIDERATIONS



- **Policy & Planning Uncertainty:**
 - Future government changes may affect funding or priorities
 - Planning & Infrastructure Bill could alter land use permissions
 - Land Use Framework: Potential for enforced land use change or contribution to 30x30 targets
 - Compulsory Purchase Risk: If corridor becomes part of strategic planning
- **Unclear Market Pathways for Nature Finance:** Private investment and natural capital markets are emerging, there's currently no well-defined route to monetise nature recovery at scale.
- **Measurement & Verification Challenges:** Difficulty in quantifying and delivering ecological benefits, biodiversity uplift, or carbon capture.
- **Carbon & Nature Credit Integrity & Volatility:** Concerns over the credibility, permanence, and pricing of credits.
- **Long-Term Commitment vs. Short-Term Certainty:** Nature recovery requires multi-decade planning, while funding and policy frameworks may only offer short-term guarantees.



WHAT ARE THE BENEFITS OF JOINING?

- **Policy Alignment & Risk Mitigation:** Being part of super-cluster amplifies your voice in shaping national and local policy. Stay ahead of evolving policy frameworks by proactively shaping your land's role in nature recovery.
- **Government Backing:** North Kent has been designated by Natural England as a priority area for nature recovery, with committed ELMS support for farmers operating within the corridor.
- **Unlocking New Funding Streams:** Gain stronger access to emerging Nature Finance opportunities, private investment, and natural capital markets — including biodiversity net gain, carbon credits, and ecosystem services.
- **Brand Power & Market Differentiation:** Leverage the Chalk to Coast identity to enhance the value of food and products grown within the corridor. Align with consumer demand for sustainable, locally sourced goods.
- **Future-Proofing Your Land:** for resilience against climate change, mitigate for potential 'polluter pays' policy and enjoy the benefits from improved pollinator & soil health by integrating nature-positive farming practices.

WHAT IS THE LANDHOLDER PLEDGE?



- The Landholder Pledge is a **non-binding, voluntary commitment** to help create a connected, thriving landscape — where nature recovery and productive farming go hand in hand.
- You decide what actions are appropriate for your land type, scale, and goals.
- The pledge does not change your legal land status, designations, or access rights. All land information remains private and under your control.
- We support productive land use hand-in-hand with nature recovery. The pledge is compatible with many approaches, including regenerative farming, stewardship schemes, and woodland management.

NATURE FINANCE

- Aggregation necessary for Large Investment
- Government Targets Private Finance - £500m/yr by 2027; £1bn/yr by 2030
- The Taskforce on Nature-related Financial Disclosures
- Blended Finance Models (government grants seed fund to kick start private investment)
- Private Sectoral Approach – Agri-food, Financial Services, built environment, Chemicals, Energy, Forestry Products, Travel & Tourism etc

Nature Finance Models:

- CSR / ESG (philanthropy)
- Nature Credits: Carbon Units, BNG, Nutrient Neutrality, Carbon +, biodiversity units
- Ecosystems services payments
- Internal Investment (Insetting)
- Green Finance Loans
- Financial Investment & Green Bonds





ROAD MAP

- **2024** - Initial concept & founding partners
- **2025 Q1**- Website launch
- **2025 Q3** - Building network & governance
- **2025 Q4** - Stakeholder Consultation
- **2026 Q1** - Ecological Visioning & Natural Capital Assessment
- **2026 Q2** – Landscape Recovery Fund Round 3 opens for applications



A large colony of shorebirds, likely plovers, is gathered on a muddy bank. Many birds are in flight, creating a dynamic scene with wings spread. The background shows a body of water and a distant shoreline with trees.



@CHALKTOCOAST