



## **Areas of Particular Importance for Biodiversity**

**Published 7<sup>th</sup> February 2024**

### Requirements for the Areas of Particular Importance for Biodiversity (APIB) map

The [LNRS statutory guidance](#) (March 2023) sets out specifically what should (and should not) be included in the APIB. It states that it should include:

- all national conservation sites.
- all local nature reserves.
- other areas of particular importance for biodiversity, defined in paragraph 22 of the guidance as:
  - all existing local wildlife sites.
  - areas of irreplaceable habitat.
  - other areas identified by the Secretary of State as being of particular importance.

Areas of irreplaceable habitat are defined as those included in the [BNG irreplaceable habitats list](#), namely:

- Ancient woodland
- Ancient and veteran trees
- Blanket bog
- Limestone pavements
- Coastal sand dunes
- Spartina saltmarsh swards
- Mediterranean saltmarsh scrub
- Lowland fens

The Secretary of State has not identified any other areas as being of particular importance and therefore there is no requirement for the map in this regard.

The guidance is clear that responsible authorities should not map any other areas that are not mentioned in paragraph 22 as being of particular importance for biodiversity. It notes that this is not to suggest that other areas are not of importance for biodiversity but is to help establish a nationally consistent baseline of areas whose particular importance has already been recognised and are protected. It states that this will help local nature recovery strategies align well with local planning policy and avoid duplicating with the identification of local wildlife sites.

### **Development of the APIB**

The APIB has been produced by Kent Wildlife Trust and Kent & Medway Biological Records Centre, under the advice of the MS4N Data, evidence and mapping technical advisory group.

The draft APIB was reviewed by the Delivery Group on 17<sup>th</sup> January 2024 and was agreed that it met the requirements of the LNRS regs and guidance. The APIB, and milestone 1, were signed off as complete by the MS4N Board on 31<sup>st</sup> January 2024.

### **APIB maps (overleaf)**

The APIB map is presented in three formats:

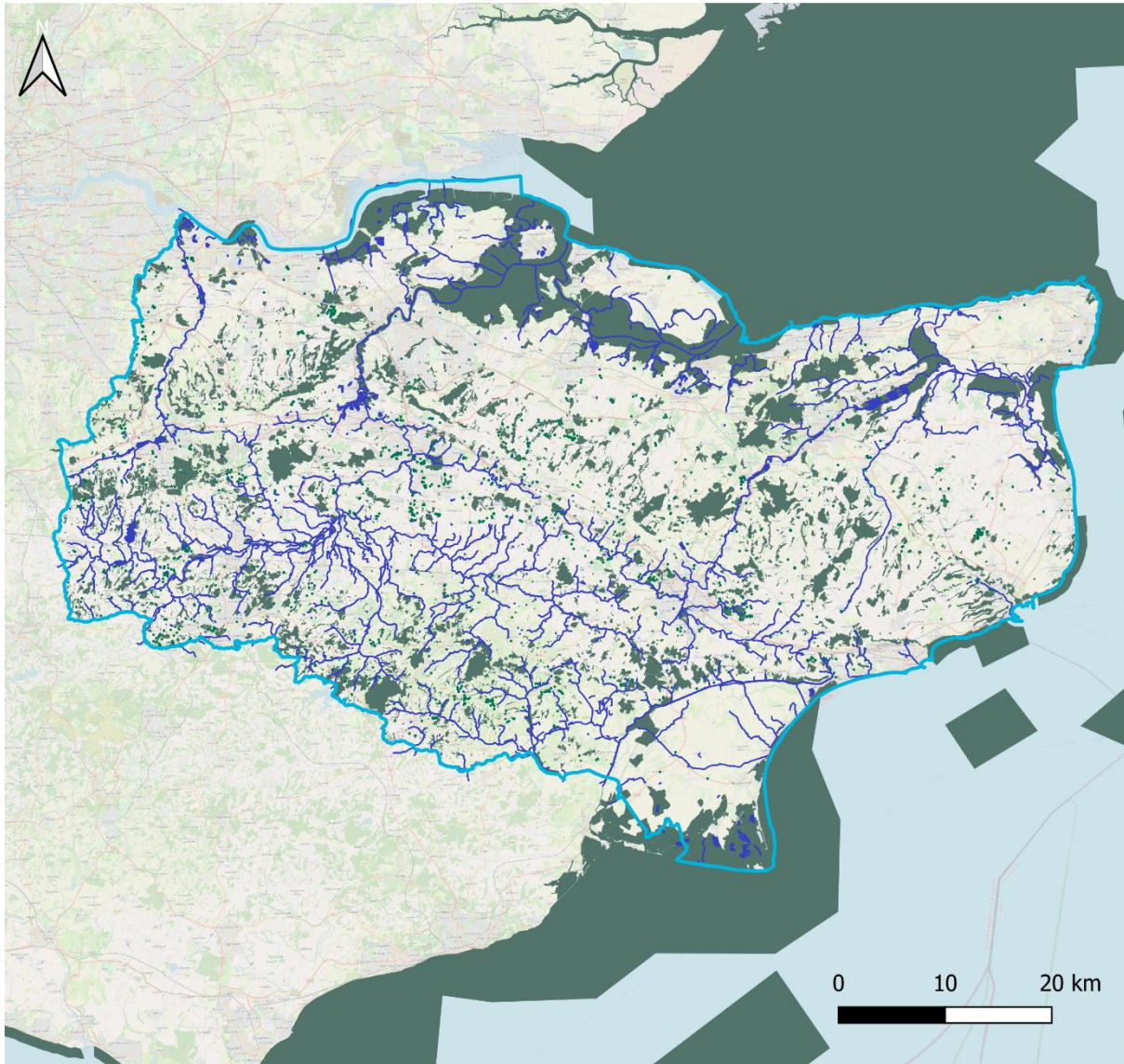
1. With all areas classed as “Areas of Particular Importance” mapped as one layer
2. With the areas identifiable as:
  - nationally designated sites
  - local wildlife sites
  - local nature reserves
  - irreplaceable habitat
3. With all elements that make up the four features identifiable:
  - marine conservation zones (mcz)
  - national nature reserves (nnr)
  - ramsar
  - special areas of conservation (sac)
  - special protected areas (spa)
  - sites of special scientific interest (sssi)
  - local wildlife sites (lws)
  - local nature reserves (lnr)
  - ancient semi-natural woodland (asnw)
  - plantation on ancient woodland sites (paws)
  - ancient tree inventory (ati)
  - coastal sand dunes
  - lowland fens
  - spartina swards

Waterbodies and rivers are shown as a layer (for reference).

### **APIB web map**

The APIB map can be viewed online at <https://webapps.kwtg.uk/apib/>

Please give the maps plenty of time to load in new layers. Certain layers could take up to a minute to load (depending on the complexity) – Kent Wildlife Trust have attempted to preserve as much detail as possible for thorough inspection of the APIB.



Map data © 2023 Open Street Map





## APIB

### Areas of particular importance for Biodiversity (APIB):

- Irreplaceable habitats (ancient woodland, ATI, coastal sand dunes, spartina swards and lowland fens)
- Nationally designated sites (MCZ, NNR, Ramsar, SAC, SPA, SSSI)
- Local Wildlife Sites (LWS)
- Local Nature Reserves (LNR)

Project: LNRS Mapping  
(In partnership with KCC and KMBRC)

#### Legend

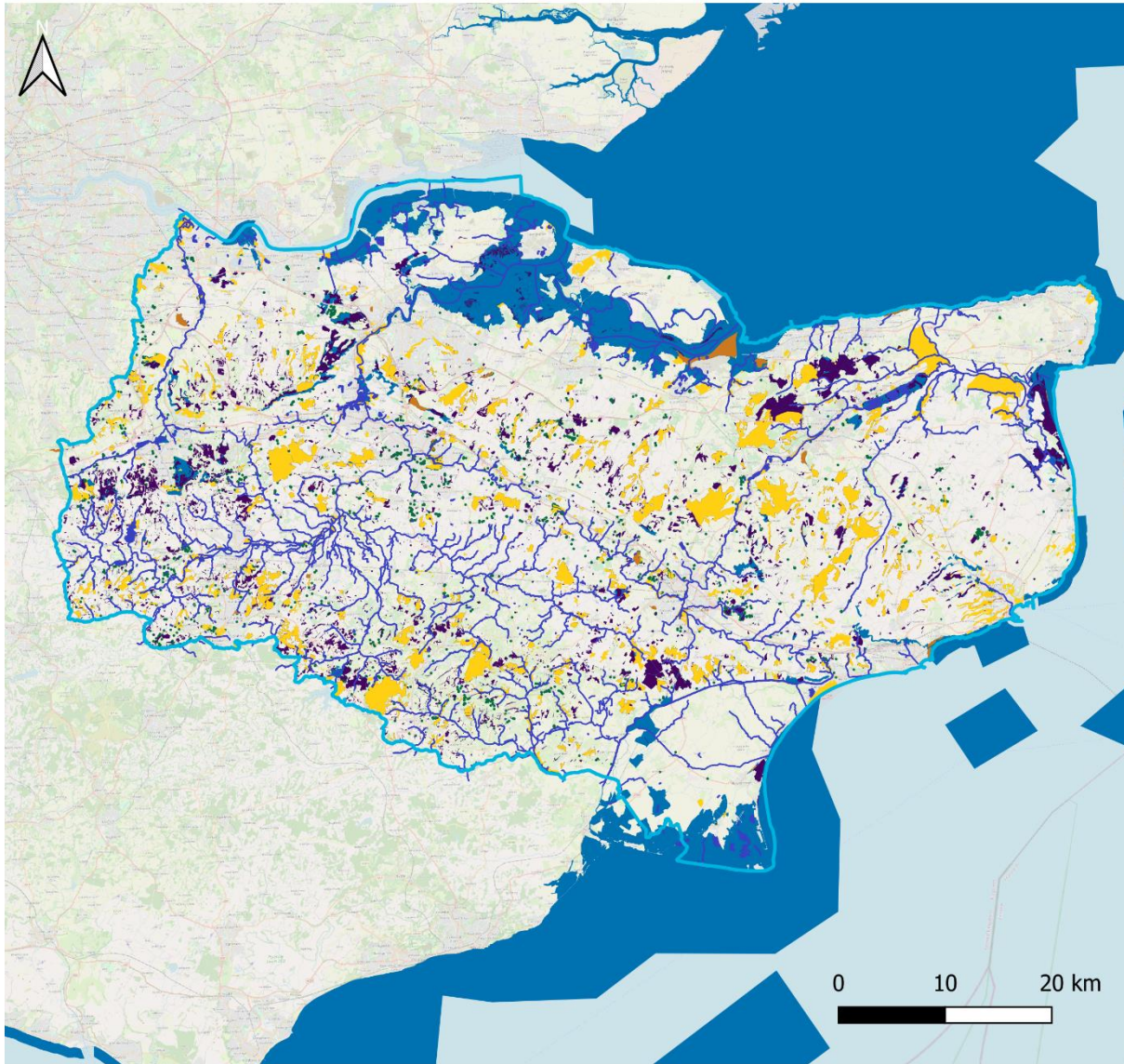
-  Kent county boundary
-  APIB (Areas of Particular Importance for Biodiversity)
-  Ancient Tree Inventory (ATI)
-  Waterbodies (for reference)

OpenStreetMap



Map drawn by: Katey Fisher  
Date drawn: 11/01/2024





Map data © 2023 Open Street Map

## APIB

### Areas of particular importance for Biodiversity (APIB):

- Irreplaceable habitats (ancient woodland, ATI, coastal sand dunes, spartina swards, and lowland fens)
- Nationally designated sites (MCZ, NNR, Ramsar, SAC, SPA, SSSI)
- Local Wildlife Sites (LWS)
- Local Nature Reserves (LNR)

Project: LNRS Mapping  
(In partnership with KCC and KMBRC)

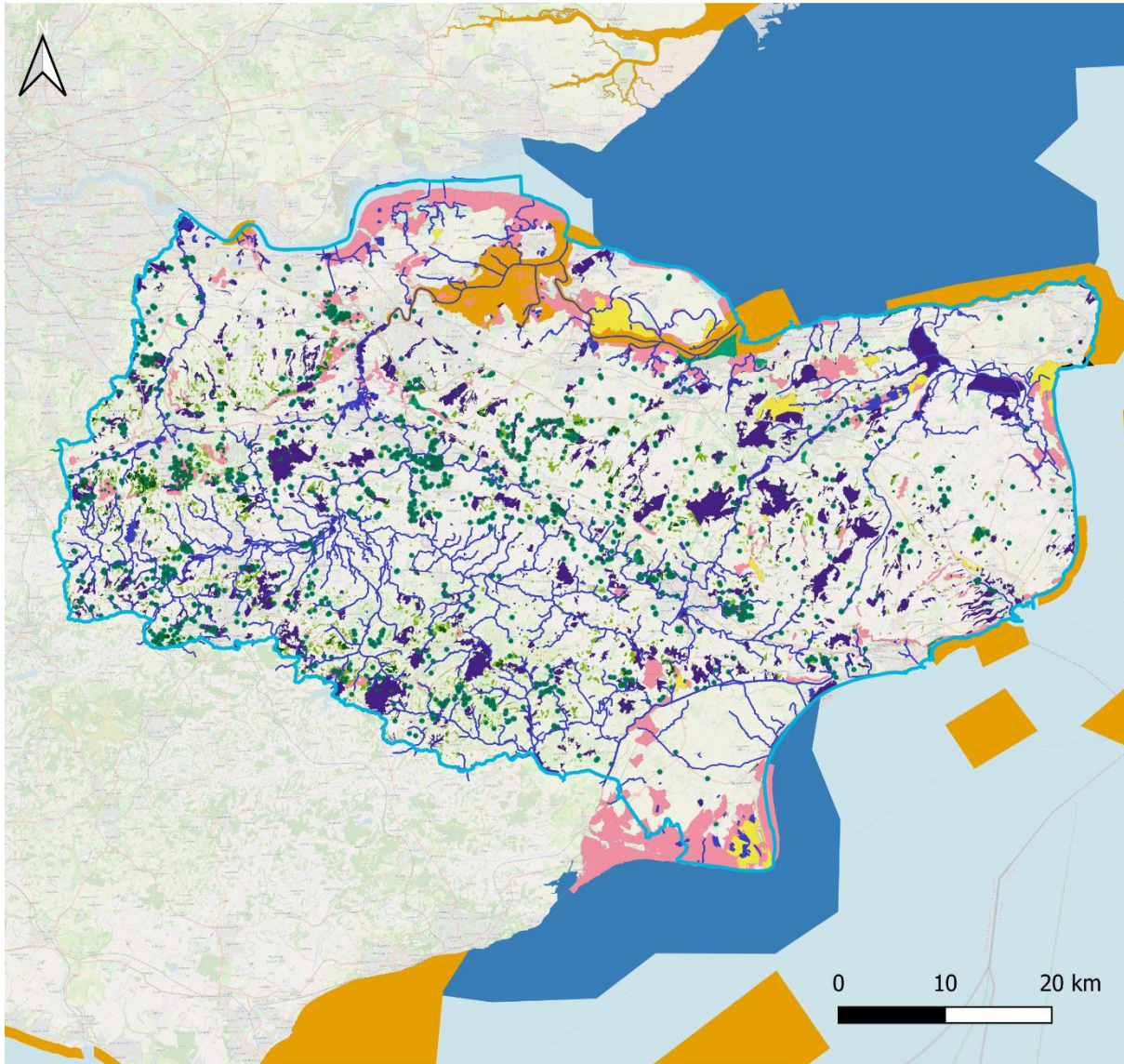
#### Legend

-  Kent county boundary
-  Local Nature Reserves (LNR)
-  Local Wildlife Sites (LWS)
-  Irreplaceable habitats
-  Nationally designated sites
-  Ancient Tree Inventory (ATI)
-  Waterbodies and rivers (for reference)



Map drawn by: Katey Fisher  
Date drawn: 11/01/2024





Map data © 2023 Open Street Map

## APIB

### Areas of particular importance for Biodiversity (APIB):

- Irreplaceable habitats (ancient woodland, ATI, coastal sand dunes, spartina swards and lowland fens)
- Nationally designated sites (MCZ, NNR, Ramsar, SAC, SPA, SSSI)
- Local Wildlife Sites (LWS)
- Local Nature Reserves (LNR)

Project: LNRS Mapping  
(In partnership with KCC and KMBRC)

#### Legend

-  Local Wildlife Sites (LWS)
-  Local Nature Reserves (LNR)
-  Marine Conservation Zones (MCZ)
-  National Nature Reserves (NNR)
-  Sites of Special Scientific Interest (SSSI)
-  Special Protected Areas (SPAs)
-  Ramsar
-  Special Areas of Conservation (SACs)
-  Ancient Semi-Natural Woodland (ASNW)
-  Plantation on Ancient Woodland Sites (PAWS)
-  Ancient Tree Inventory (ATI)
-  Coastal sand dunes
-  Lowland fens
-  Spartina swards
-  Waterbodies (for reference)

OpenStreetMap

Map drawn by: Katey Fisher  
Date drawn: 11/01/2024



