



# Nature-based Solutions – *Delivering nature recovery*

Paul Hadaway - Director of Conservation & Engagement



# Local Nature Recovery Strategies

How will we fund nature recovery?

## Existing Schemes Challenges & Opportunities:

- **Current ATP – BPS fully phased out by 2027**
- **ELMS (SFI, Mid/higher CSS, LR) – public money/public goods**
- **Need to be more than ‘income foregone’**

## Emerging Opportunities:

- **Nature-based Solutions payments –**
- **Blended finance, long-term income streams**
- **Supported by Conservation Covenants**



# What are Nature-based Solutions?

Nature-based solutions:

- are inspired and supported by nature and natural processes;
- are cost-effective;
- can realise wider benefits to society, the environment and the economy;
- can build resilience into our communities, towns and cities, land and seascapes;
- can strengthen our connection with nature.





Nutrient Neutrality



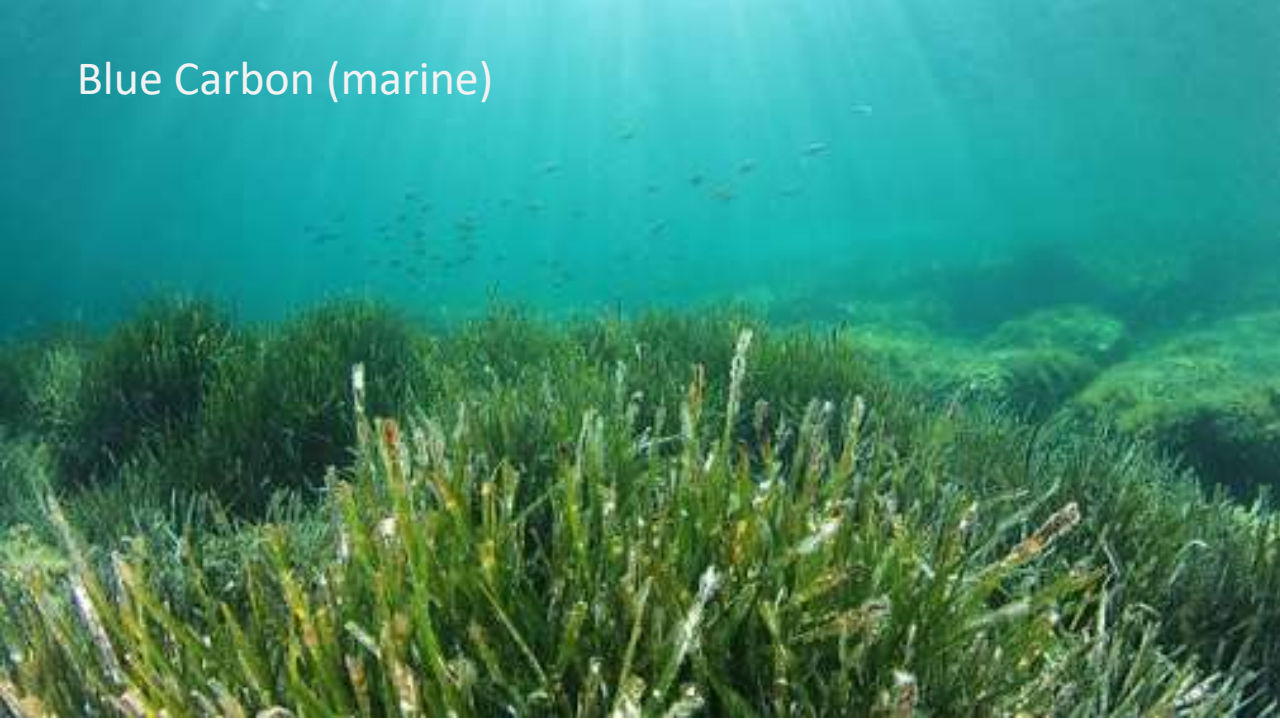
Carbon Credits



Biodiversity Net Gain (BNG)



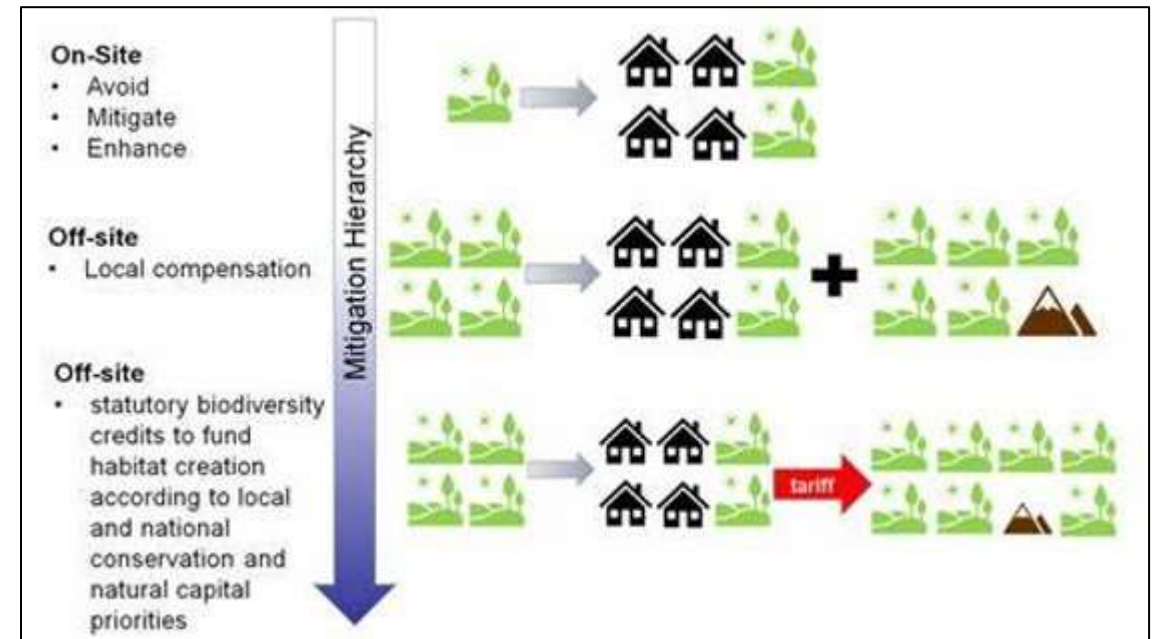
Blue Carbon (marine)





# Biodiversity Net Gain (BNG)

- Policy stating every new development is required to provide 'genuine and demonstratable biodiversity gains' compared to the baseline
- Minimum 10% (preferred 20% uplift from the baseline)
- Assessed using DEFRA Biodiversity Metric
- Formally comes into effect November 2023, but is already marketable
- Biodiversity units going for around £12k - £20k
- Requires demand from development for the habitat being created

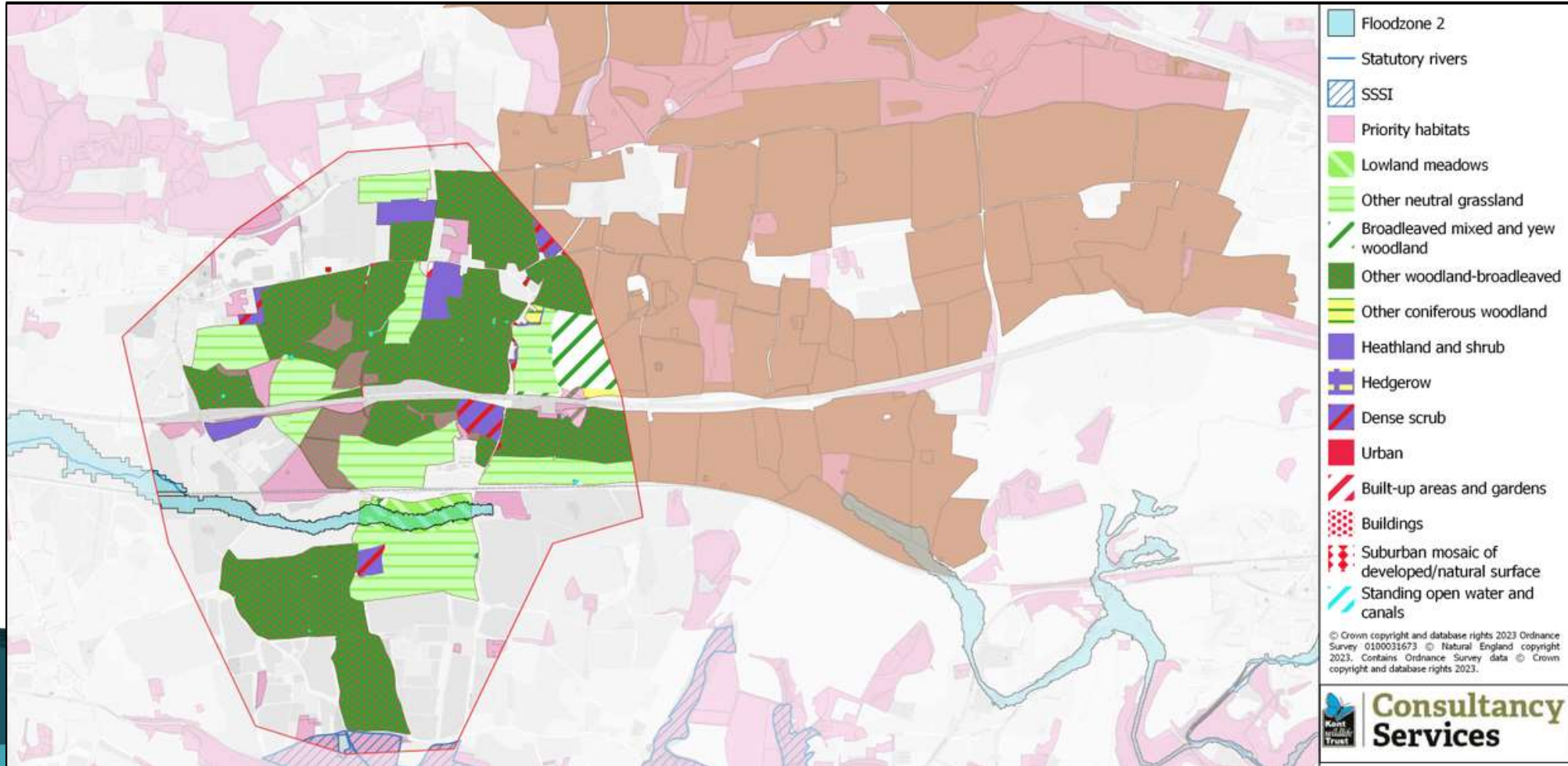


## Nutrient Neutrality

- Scheme to ensure any development close to water course does not increase nutrient levels (nitrates and phosphates) which travel downstream and negatively impact designated sites (e.g. Stodmarsh).
- Essentially nutrient “offsetting” to ensure neutrality through agricultural reversion/wetland creation etc.



# BNG Approach





# Wilder Carbon

The UK's high integrity, natural climate solution

Safeguarding nature by protecting and restoring carbon rich native habitats across the UK for climate, for wildlife, and for society whilst delivering genuine carbon removals.







## WILDER CARBON UNITS

1 Unit equivalent to 1 tonne CO<sub>2</sub>e locked up or avoided.

Units termed 'Estimated Issuance Units' (EIUs) prior to verification

50% of EIUs sold up front pre verification, to provide up front funding projects need to start.

Units are a premium 'conservation grade' product that establish a fair price for Trusted Deliverers, and the land-owners they are working with.

**2023 Wilder Carbon EIUs are priced at £75.**

The OECD estimates a price of £123 per Carbon Unit is needed by 2030.



# Case Study: Heather Corrie Vale – West Kingsdown, Kent

- 49 ha abandoned golf course – amenity grassland, scrub & trees.
- Management with low-intensity grazing to achieve woodland, scrub, grassland mosaic.
- 6,423 EIUs at £75 = £481,725 income.
- Biodiversity net gain: 72.4%.
- Opportunity to stack biodiversity units: £200,000 - £300,000 additional income.









# Darent Valley Landscape Recovery



NORTH



- Project Boundary
- Project Opportunity Areas
- 19 Landowners/Farmers
- River Darent

- Within the Project Area:
- Area of Outstanding Natural Beauty
  - 22 Local Wildlife Sites



## Headline Opportunities:

- Restoring 35km of the river reach.
- Restoring ~95ha of Chalk Grasslands and creating a potential ~120ha more.
- Four fold increase in Lowland Meadows from ~16ha to over ~100ha along the River Darent.
- Restoring a further ~284ha of grasslands and creating ~356ha more of species rich grasslands.
- Possibility to enhance ~500ha of scrub and woodland.



**A total of 1579 hectares of habitat creation and restoration opportunities across 6127 hectares of land!**

## The Partners

- Darent Valley Farmer Cluster
- Kent Wildlife Trust
- Adonis Blue Environmental Consultants
- South East Rivers Trust
- North West Kent Countryside Partnership
- Kent Downs Area of Outstanding Natural Beauty
- Darent Valley Landscape Partnership Scheme
- BTF

**Drivers:** valuable chalk stream habitat, physical modification, groundwater abstraction, flood risk, diffuse pollution.

**Approach:** restoring the river channel, its ecological connectivity, valley habitat & biodiversity - restoration of floodplain, restoration & creation of valley habitat mosaic, addressing barriers to fish movement; natural regeneration on land, conservation grazing.





## DVLR Headline Figures

1,580 ha of land restored for nature (an area 11 x the size of Hyde Park)

Aiming to achieve Good Ecological Status for  
~35 km of globally rare chalk stream habitat

(Improved from Moderate / Poor)

Up to 55% increase in biodiversity value of terrestrial habitats  
(3,886 - 4,454 BNG units)

43,000 - 148,000 tonnes of CO<sub>2</sub> removed from the atmosphere over 50 years  
(or 860 - 2960 tonnes per year on average)  
Equivalent to removing ~1,000 cars from the road every year.

Reduced flood risk for hundreds of homes and businesses  
444 homes are at risk of flooding in the Darent Valley, 163 of which are at  
medium-high risk

More and better green spaces for all  
Half a million people live within walking distance, 1.3 million people live  
within 10 km

Accessible from London Bridge in under half an hour





