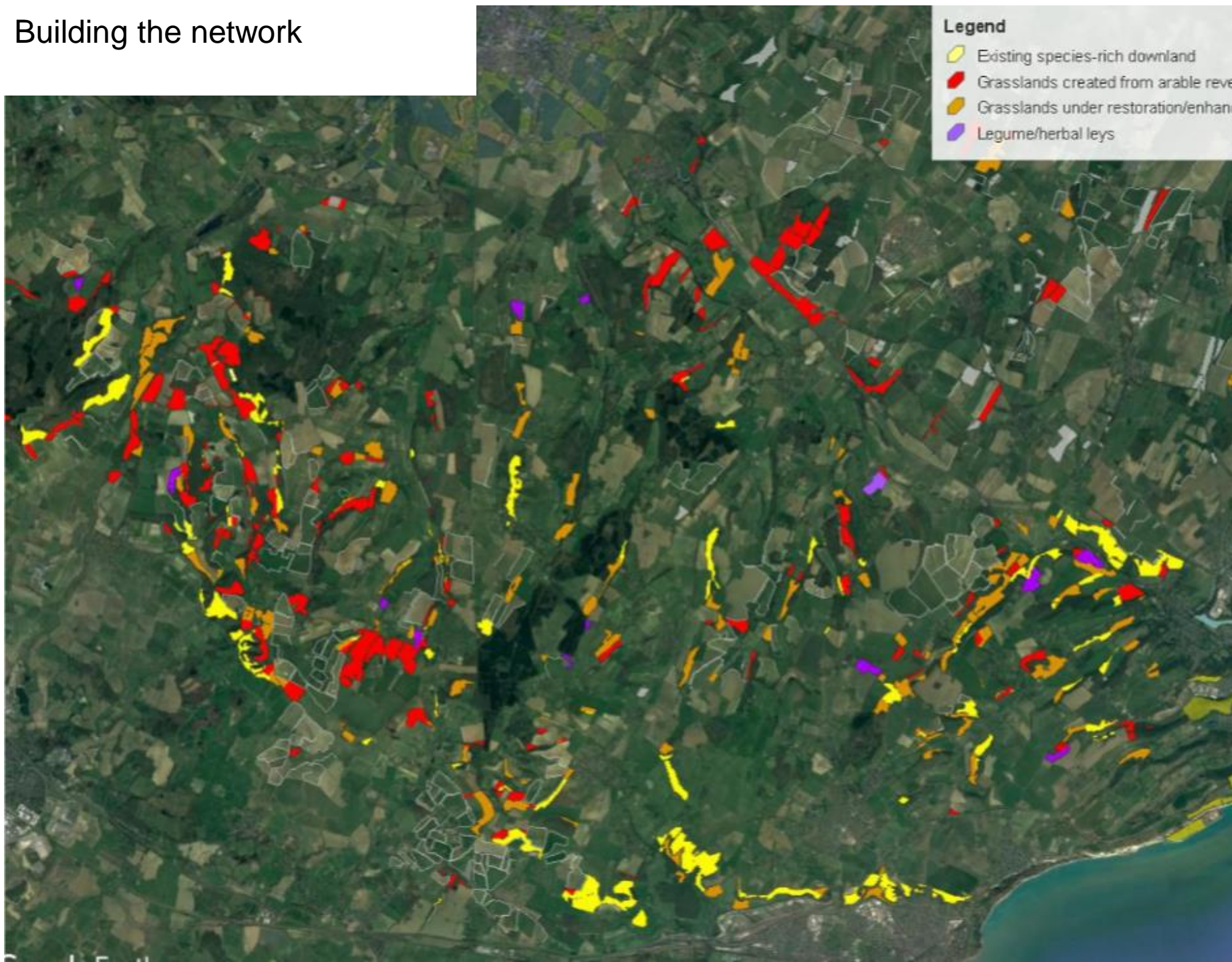
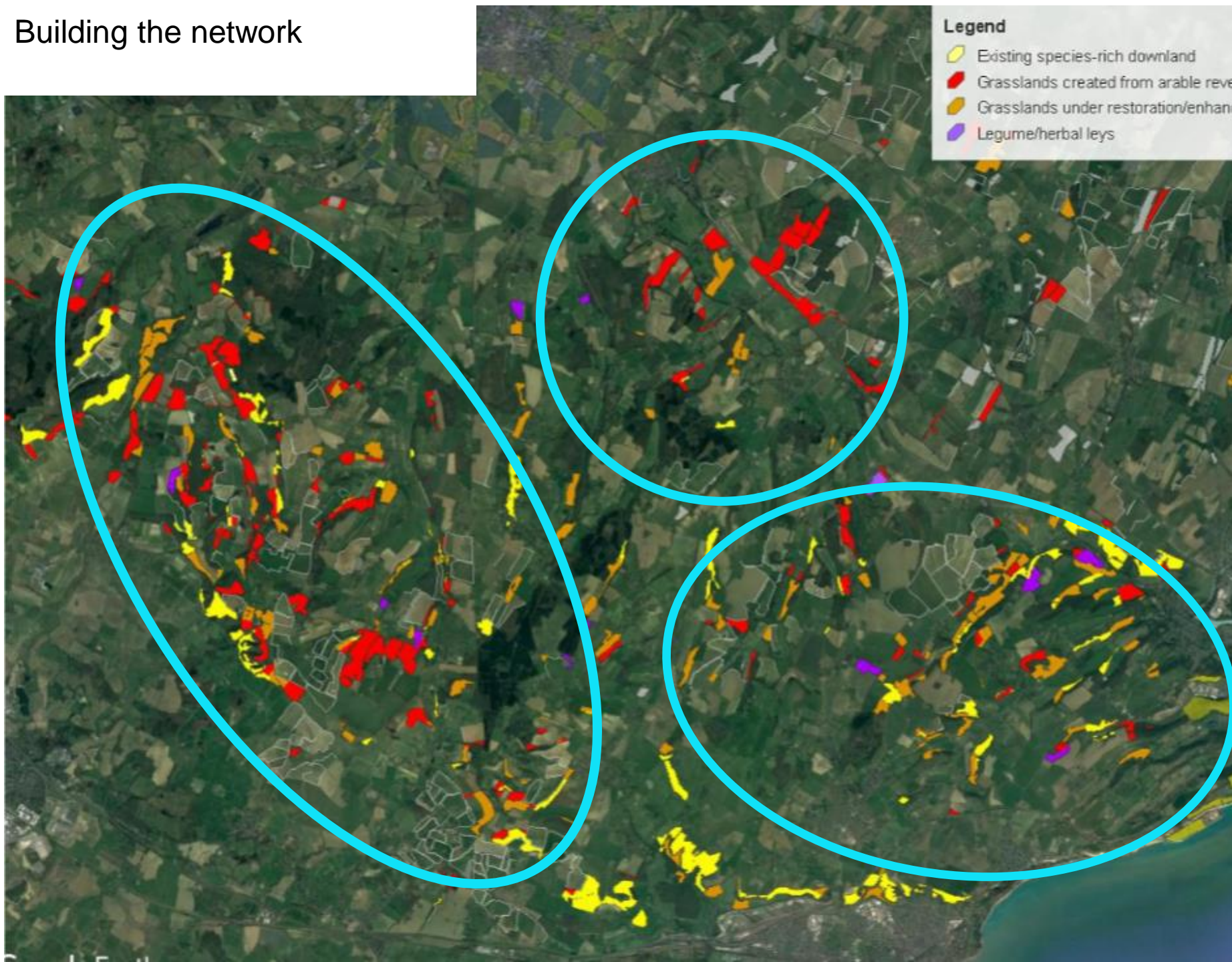


# Building the network



# Building the network



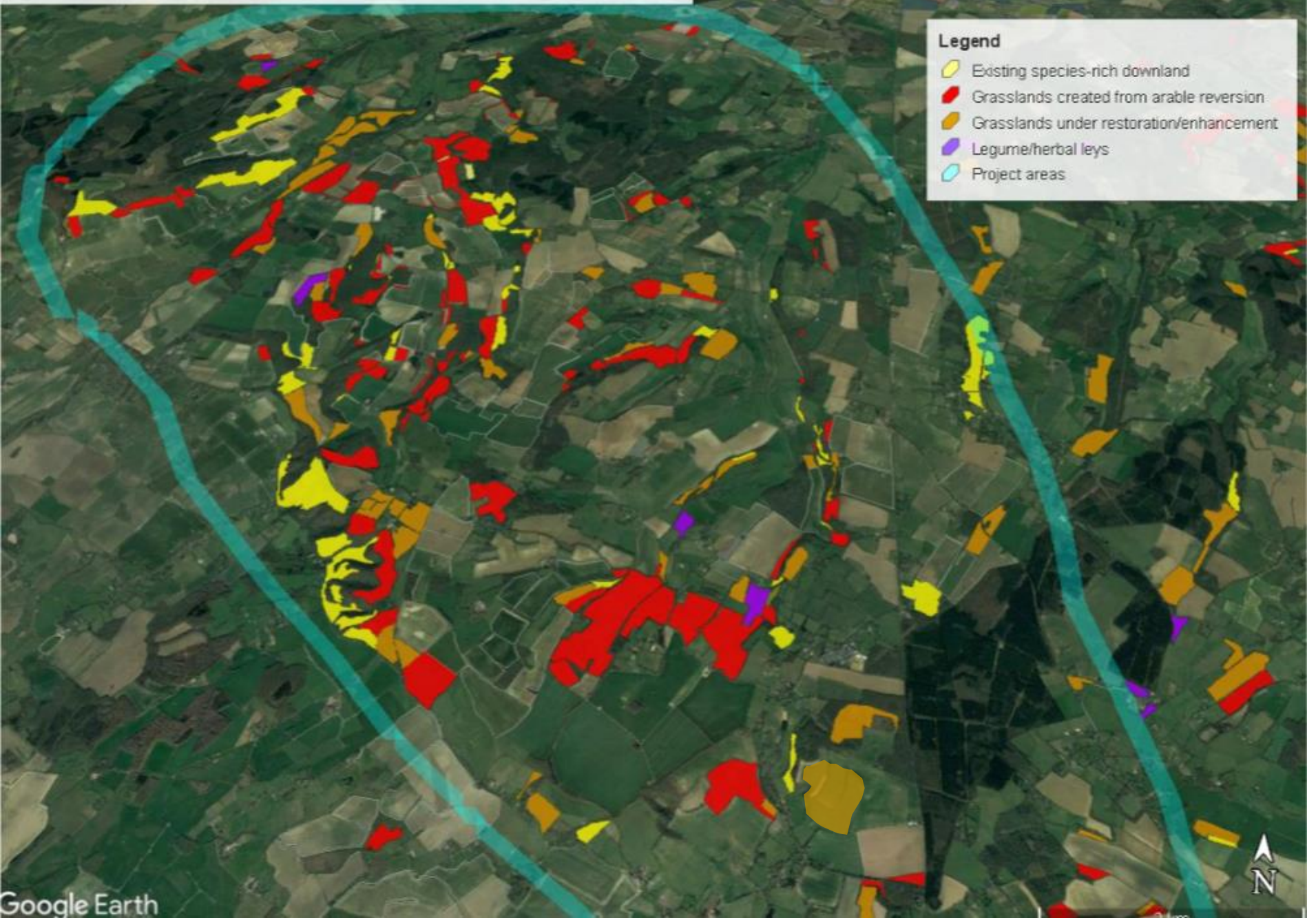
# Agri environment schemes in the Kent Downs

Building the network – where we are now

	Species-poor grassland restoration (ha)	Arable reversion (ha)	Native wildflower seeding (ha)
East <u>kent</u> valleys	310	125	137
Stourvalley/ stone st	238	342	114
Barham Downs	85	348	272
	633	815	523



# Stour Valley to Stone Street Nature Recovery Network

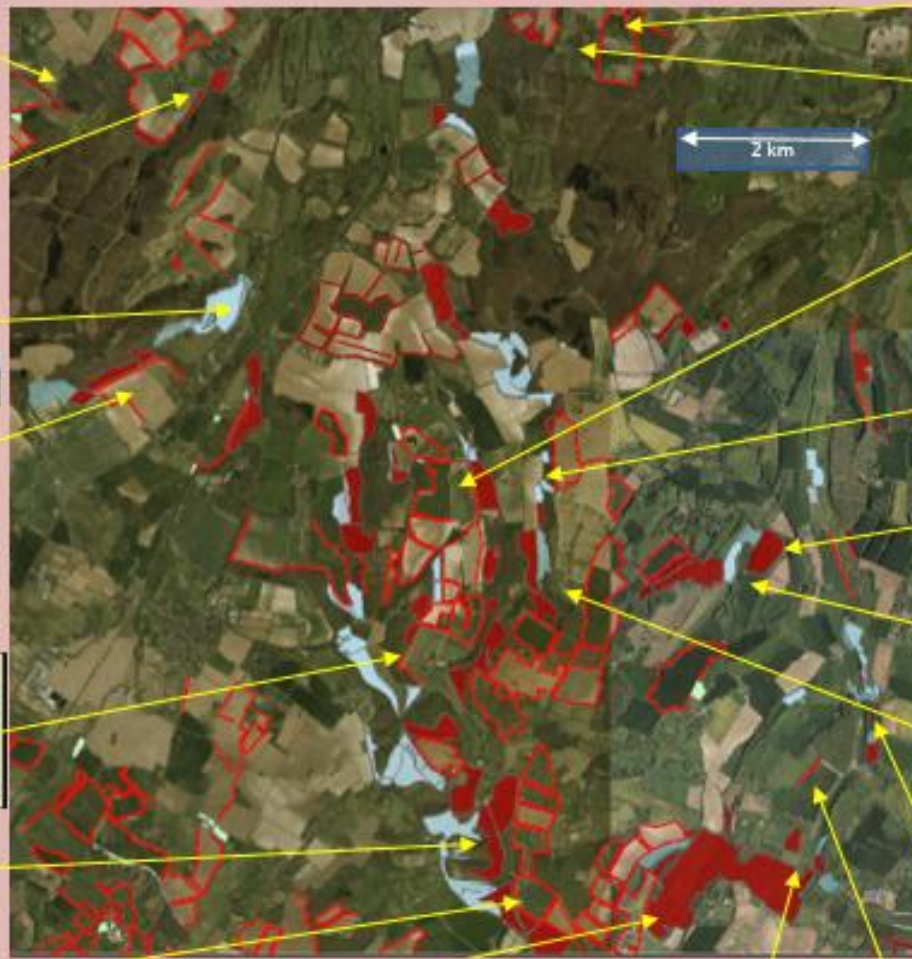


## Legend

- Existing species-rich downland
- Grasslands created from arable reversion
- Grasslands under restoration/enhancement
- Legume/herbal leys
- Project areas



# Stour Valley to Stone Street Nature Recovery Network



## Dane Court Farm

10ha arable reversion, part enhanced with native wildflower mixes

FWP arable plots/margins



## Young Manor Farm

4ha native wildflower sown reversion

FWP arable plots /margins



## Godmersham Estate

26ha sp rich grassland  
Native wildflower sown margins

FWP arable plots and margins,  
Extensive scrape creation



## Bilting Grange Farm

14ha restored sp rich grassland,  
14ha wildflower sown reversion

FWP arable plots and margins



## Dean Farm

40ha arable reverted sp rich grassland  
20ha sp. rich grassland

FWP arable plots /margins



## Cold Blow Farm

35ha reverted grassland -  
part native wildflower seeded



## South Hill Farm

35ha native wildflower sown reversion

FWP arable plots and margins



## Kingsmill Down Farm

110ha long term sp rich /  
semi improved arable  
reversion



## Trinity Farm

2ha native wildflower sown reversion  
5ha sp rich grassland

legume rich swards



## Elmsted Court Farm

4ha grassland restoration  
FWP arable plots and  
margins

## Thruxted Farm

5ha sp rich arable reversion  
FWP arable plots/margins



## Upper Mystole Farm

14ha scrub mosaic management

## Crundale Estate

5ha sp. rich grassland  
44ha sp rich and semi improved arable reversion/grassland  
with 7ha sown with native wildflower seed



## Hunt Street Farm

17ha native wildflower sown grasslands  
8ha sp rich grassland

FWP arable plots/ margins



## Yockletts Farm

4ha native wildflower sown reversion  
17ha sp rich/semi improved grassland

FWP Arable plots and margins



## Springhill Farm

5ha sp rich arable reversion  
2ha sp. rich grassland

## Grandacre Farm

36ha reverted sp rich and semi improved  
grassland  
9ha sp rich grassland


FWP Arable plots and margins





## Great Dowles Farm

3ha native wildflower seeded reversion  
7ha sp rich grassland



 Arable reversion/restoration/ margins  
(360ha including 60ha sown to native  
wildflower mixes)

 Existing species-rich grassland

 Flagship species: Duke of Burgundy,  
Black veined moth

# Stour Valley to Stone Street Project Area

Arable reversion through natural recolonisation 342ha since 1995



# Native wildflower meadow seeding projects :

Stour Valley Project Area : 114ha across 36 sites



next 4ha phase of seeding  
2020

Arable reversion 2009 – native wildflower seeded in 2012, with natural colonisation of marjoram, thyme, pyramid orchid, yellowwort



Managing for different sward structure





# University of Kent study Invertebrate communities in arable reversion



